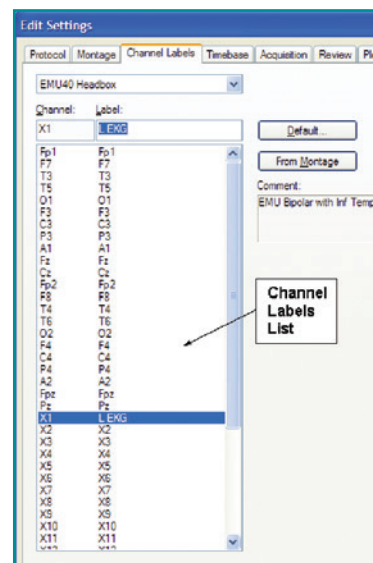


Natus[®] NeuroWorks[®] & SleepWorks[™] Montage Editor

Before creating a new montage, any additional channels that are not part of the 10-20 system (EKG, EOG, EMG, T1 & T2, etc.) that are to be applied and placed in auxiliary locations in the head box should be identified using the **Channel Labels** page.

Channel Labels

- Open the NeuroWorks or SleepWorks application
- Select **Edit**→**Settings** from the menu
- Click **Channel Labels** tab to switch to the **Channel Labels** page
- Select the type of headbox to be used with the montage so that the correct channels will appear in the list
- Highlight the desired channel
 - Note that the Channel and Label boxes will then be populated with the highlighted channel information – hardware **Channel** on the left and editable **Label** on the right
- Type the new Label identifier in the box provided
 - For example: Select X1 channel, change the label to **L EKG**
- Click **Apply** to save the new custom labels



Apply Custom Labels to a Montage

- Click the **Montage** tab to switch to the **Montage** page
- Select the montage to which you want to apply the labels
- Click the **Apply Custom Labels** button to transfer the labels to the montage

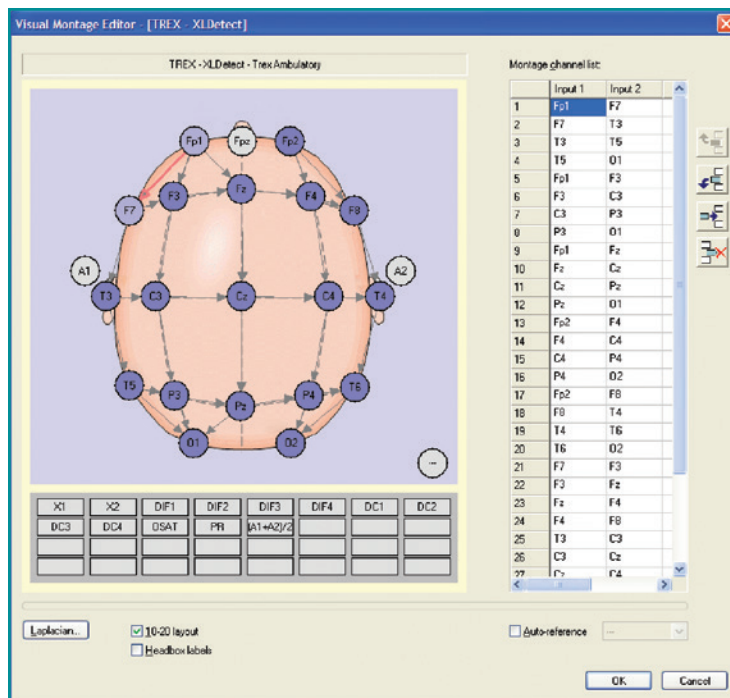
IMPORTANT: Montages are created for specific headbox types

Create a New Montage

- Choose **Edit**→**Settings** and switch to **Montage** page
- On the right side of Montage Editor click the arrow on the **New** button to select the type of new montage to be created
- A message will appear verifying the headbox type for which the montage is to be created. If incorrect – change the headbox type
- Click **OK** to continue

Visual Montage Editor

- Click the **Visual Editor** button
- Connect bipolar inputs by clicking on "From" channel and drag to the "To" channel
- For referential montages, click to place a check mark in the box next to **Auto-Reference** then select the appropriate reference, allowing you to populate montage channels by simply clicking channel names on the 10-20 head image
- Adjust the order of channels by using the **Up** and **Down** arrow buttons
- When finished, click **OK**
- Name the montage and press **Enter** on the keyboard or unclick the **Rename** button



Continued on next page

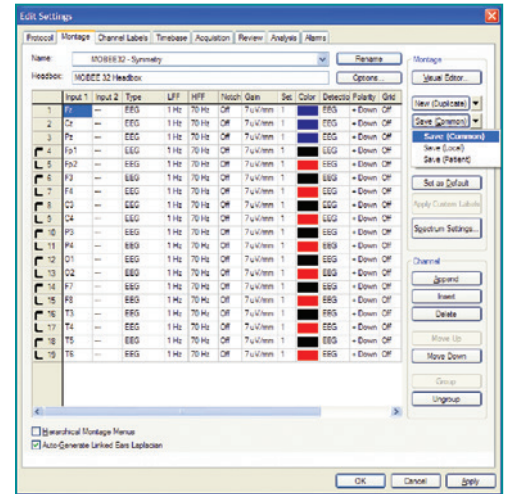
Quick Guide – Montage Editor (continued)

Montage Editor Table

- Right-click in the desired cell to modify channels, type, filters settings, gain, color, detection type, polarity and gridlines
- Under Channels click **Append** to add channels to the end of the montage
- Under Channels click **Insert** to add a channel above the selected cell
- Under Channels click **Delete** to delete selected (highlighted) channels

Save a Montage

- Click the arrow beside the **Save (Location)** button to select a location in which to save a montage
 - **Save (Local)** to save the montage to the local station (not shared with other stations)
 - **Save (Common)** to save to a directory that will be shared with other stations
 - **Save (Patient)** to save the montage along with the Patient record in the Natus Database – The montage will be available when additional studies are recorded for the same patient (using Returning function in Natus Database)



Set a New Default Montage for Acquisition

- Select **Edit→Settings** and switch to the **Montage** page
- Select the desired montage from the **Name** list
- Click **Set as Default**

Montage Conversion Tool (Import / Export)

The Montage Conversion Tool is used to convert a montage originally created for one headbox type (e.g. Embla NDx) to work with a different headbox type (e.g. Natus Brain Monitor).

NOTE: Channels that do not have exact match in target (current) headbox will not carry over to new montage

New (Import)

Use this option when you are acquiring a study and do not have a montage for the currently used headbox, but a similar montage already exists – although for a different headbox

- Start acquiring a study
- Select **Edit→Settings** and switch to the **Montage tab**
- Click **New (Import)**
- Select the source headbox type and the source montage and click **OK**
- Name the newly imported montage
- Save the newly created montage as necessary
- Click **Apply** to switch to the new montage

New (Export)

Use this option after creating a **new montage** for one headbox (e.g. Trex) that will be made available for other headboxes

- Open the NeuroWorks or SleepWorks application
- Select **Edit→Settings** and switch to the **Montage tab**
- All montages for all headbox types will be shown if no study is open
- Select the source montage from the list
- Click **New (Export)**
- Select the target headbox type
- Click **OK**
- Save the newly created montage as necessary



Natus Neuro
3150 Pleasant View Road
Middleton, WI 53562 USA
Tel: 1-800-356-0007
1-608-829-8500
Fax: 1-608-829-8709

www.natus.com