

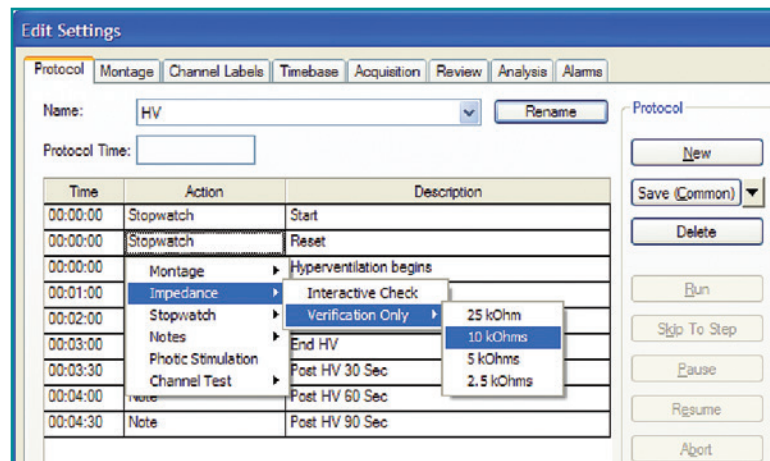
Natus[®] NeuroWorks[®]

Protocols

A Protocol is a customizable set of actions that is set up to be executed in sequence. Common examples of protocols include Photic Stimulation, Hyperventilation, Impedance Check and Channel Test. Once established, a protocol can be named and saved. Then, it can be activated from the Protocol menu. The easiest way to create a new protocol is to copy an existing protocol and make changes to it as needed.

Create a New Protocol

- Open the NeuroWorks application
- Select **Edit**→**Settings** from the menu
- Click **Protocol** tab to switch to the Protocol page
- Select a similar protocol that you will copy (if possible)
- Click **New** button (the top button on the right)
- Type a new name for the protocol into the **Name** combo box and press **Enter** on the keyboard or unclick **Rename** button to the right of the name
- The new protocol name appears in the **Name** combo box menu
- Make changes to the steps in the protocol list using one of the buttons in the Step section of the **Protocol** tab: **Append**, **Insert**, **Modify** or **Delete**



Append or Insert a Step in a Protocol

- Click the **Append** or **Insert** button in the **Step** section
- Select an action from the drop-down menu
- The selected action is appended to the end of the list of steps or inserted before the selected step

Modify a Step in a Protocol

- To modify the time click the cell in the **Time** column for the row of the step to be modified and type in the desired time when this step will start (from the beginning of the protocol sequence)
- To modify the action, right-click cell in the **Action** column for the step to be modified and select the desired action from the list
- To modify a description (usually additional parameters for the selection action), right-click the cell in the **Description** column and select the desired action from the list

Delete a Step from a Protocol

- Click a cell in the step you want to delete, and click the **Delete** button

Save a Protocol

- Use the **Save (Common or Local)** button
- Click the arrow beside the **Save (Common or Local)** button to see the drop-down menu locations that are available for saving the protocol (common to share with other stations, local to save locally on the current station)

