

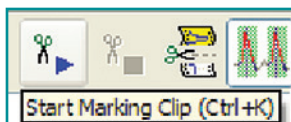
# Natus<sup>®</sup> NeuroWorks<sup>®</sup> & SleepWorks<sup>™</sup>

## Pruning

The Pruning feature is used to cut out sections of the study for physician review or to remove unwanted sections of video.

### Marking Clips

- Open the study to be pruned
- Drag the cursor to the desired starting point
- Click the **Start Marking Clip** button
- If desired, type in a comment about the clip
- Page or move cursor to the desired end point and click the **End Marking Clip** button
- Continue marking clips until all desired areas have been marked



### Process Marked Clips

- Click the **Edit Clips** button to process the marked clips
- By default, video will be included with the manually pruned study, to exclude video, place check in the check box in the **Include/Don't Include Video** column of the Clips dialog box

**Unmark** – Delete the entire selected clip

**Properties** – Open Note Details for the selected clip

**Prune** – Initiates creation of pruned study

**Auto Clips** – Describe automated clipping parameters

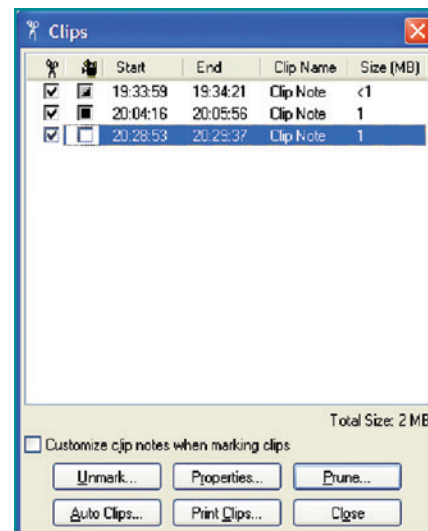
**Print clips** – Allows printing of clips

**Close** – Close the dialog

- After all selections are complete in the Clips dialog, click the **Prune** button
- Type a name for the clipped study in the field provided

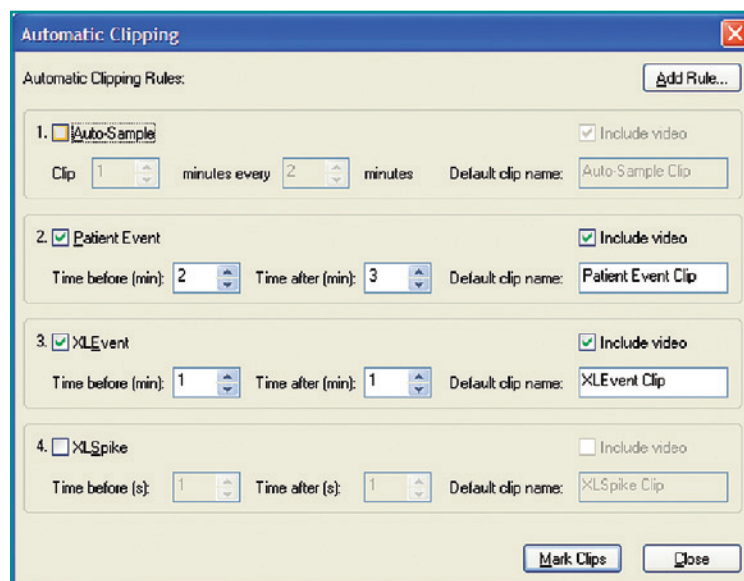
*It is important to remember that by pruning the study the selected sections ARE NOT deleted from the original study. The clipped sections are copies of the highlighted data.*

*The newly pruned file as well as the original study will appear in the Natus Database once the pruning dialog is closed.*



### Auto Clipping

- Open the study to be auto-clipped
- Mark events of interest (or use spike / event detection to mark events of interest)
- Click the **Edit Clips** button on the toolbar
- Click the **Auto Clips** button
- Click to place a check mark in the box next to Auto-Sample to enable clips to be taken at set intervals within the study (if desired)
- Click to place a check mark in the box next to Patient Event, XLEvent and/or XLSpike (if desired)
- Specify which event types will have clips marked around them and the pre/post time intervals for each type of clip
- If desired, change the default clip names
- If desired, click **Add Rule** button to set up additional user-defined rules for automated clipping
- Click **Mark Clips** to let the system mark clips around the selected event types
- Proceed with creation of the pruned study as above



Continued on next page


## Quick Guide – Pruning (continued)

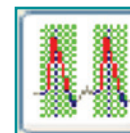
### Instant Pruning (NeuroWorks Only)

Unlike Auto Clipping, Instant Pruning does not create a new study record. Instead, it instantly displays the current study as if it had been pruned.

When Instant Pruning is active the user is able to navigate through the study, scroll the record, show video, print and access most of the review functions. Only the sections around marked events of interest will be shown.

#### To use Instant Pruning:

- Open an EEG study for review
- Make sure the **Instant Pruning** button is selected (the Instant Pruning tabs will be visible)
- Several standard tabs are provided to access standard event types (**Events**, **Spikes**, **marked Clips** or to return to general **All** Study View)
- Click one of the tabs to switch to Instant Pruned view
- Click  to create a new tab (the system will remember the newly created tabs)
- Enter a name for the new tab
- Specify which event types will have clips marked around them and the pre/post time intervals for each type of clip (just as with Auto-Clipping)
- Click **OK** to activate the new tab
- Click **All** (or press **Alt+L**) to return to All Study View (your current position will stay the same)
- Use **Alt+L** to switch between All Study View and the last Instant Pruning view that was active without losing your current position



Instant Pruning Button



Instant Pruning Table



#### Natus Neuro

3150 Pleasant View Road  
Middleton, WI 53562 USA  
Tel: 1-800-356-0007  
1-608-829-8500  
Fax: 1-608-829-8709

[www.natus.com](http://www.natus.com)