

Acquisition

Start a new study

Click the New EEG button on the top of the database screen and then enter the patient's information. Only the first and the last names are mandatory at this step, the rest can be entered later when the study is running. Click **Start** to begin the study.



Start and stop the recording

Click the **Start/Stop Recording** button or press **Ctrl+Space**. When the recording is stopped, a red alert sign will flash stating "Not Recording". To restart recording click the same button again.



Impedance check

Click the **Check Impedance** button. The impedance check will begin. The test will continually cycle until the **End** button is clicked. Impedance results will be stamped on the record for later review.



Starting and stopping video recording

Click the **Start/Stop Recording Video** button.

When the video recording is active there will be a blue line drawn above the EEG. Video recording may be started or stopped at any point during the acquisition of the study. Video can only be recorded when EEG recording is active.



Moving the camera

Systems that are equipped with a non-fixed, pan/tilt/zoom camera enable the user to move the camera from within the application as well as zoom in and out. For systems equipped with fixed cameras and software-controlled zoom, follow the "How to Zoom" instructions below.

Panning and tilting the camera

Use the green arrows located on the **Camera** toolbar.



How to zoom

The magnifying buttons will zoom in (+) and out (-).

Change filters/sensitivity/timebase



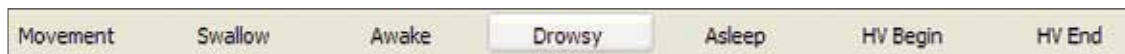
- Filters and sensitivity can be changed using the **Montage** toolbar. If the correct setting is not available from the dropdown then the desired value may be typed directly into the field. The timebase (or "page size") may be adjusted by clicking the dropdown arrow next to the setting and selecting from the available timebases
- To change the properties of an **individual channel**, click on the channel label to highlight it then make the desired changes in the toolbar
- To change the properties of **multiple channels**, hold **Ctrl** or **Shift** while clicking on the channel label to select multiple channels and then make the desired changes in the toolbar
- Press the **Up** or **Down** arrow keys on the keyboard to increase or decrease sensitivity (gain) on selected channels
- Press and hold **Shift** key and, while still holding it, click **Left** or **Right** arrow keys on the keyboard to change the timebase ("page size")

Continued on back page

Changing the montage

Right-click on the Wave screen (on the signal traces) and then select appropriate montage from the menu.

Enter comments



Pre-programmed comments may be entered during the recording by clicking the buttons on the **Note** toolbar.

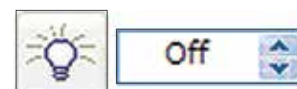
Free text notes can be entered by typing on the keyboard while the study is active. This will add a note at the point where typing started. To enter a note at a different point right click and select **"Add Note Here..."**.

Photic/HV



Photic and Hyperventilation (HV) automatic sequences are selected from the **Protocol Menu**. Select the desired protocol and the sequence will begin automatically. To pause/resume or stop the protocol, use appropriate buttons on the **Protocol** toolbar (above).

To **manually** adjust the photic frequency, use **Photic Stimulation** control on the toolbar. The light bulb button is used to start and stop the flashing of the photic lamp or adjust the flashing frequency. The frequency may also be adjusted using the up and down arrows to the right of the currently displayed rate.



Review the current study

To review the current study, press the **Review Current Study** button. The currently collecting study will open in the adjacent window. The review window can be maximized or closed independently of the live recording window.



Healthcare solutions with one thing in mind. You.

©2020 Natus Medical Incorporated. All Rights Reserved. All product names appearing on this document are trademarks or registered trademarks owned, licensed to, promoted or distributed by Natus Medical Incorporated, its subsidiaries or affiliates. 025931 Rev 02

natus

Natus Medical Incorporated

natus.com