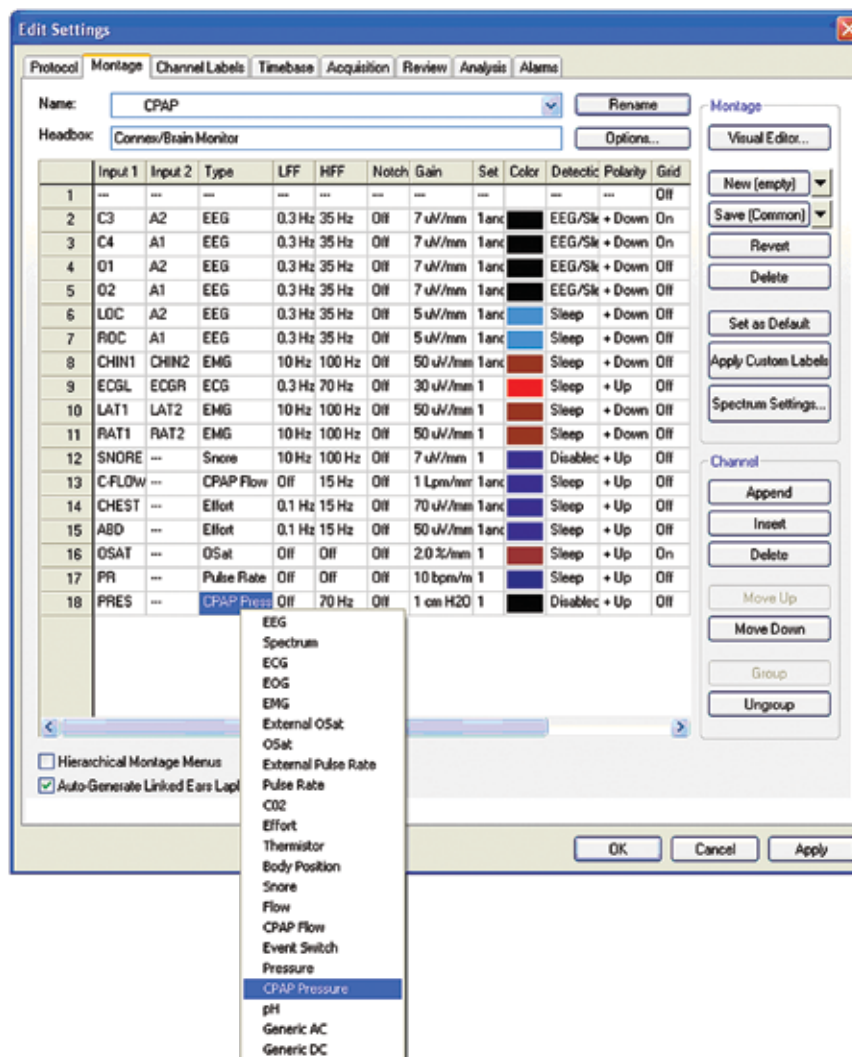


CPAP calibration/external devices

- Set up the channel correctly in the Montage Editor
 - Open the SleepWorks program and select **Edit** from the main menu
 - Select **Settings** from the menu – **Edit Settings** dialog will open (see below)
 - Select the **Montage** tab.

In the example below, the C-Flow channel is set to the type CPAP Flow, and the Pres channel is set to the type CPAP Pressure



- Verify that channel **Type** for pressure channel has been set to “CPAP Pressure”.
- To change the type, right click on the cell in the **Type** column and select from the pop up menu
- Click **OK** to save the changes and close the dialog

Continued on back page

- Confirm the hardware channels that are used for recording the CPAP or other device signal
 - Switch to Channel Labels tab and if necessary click **From Montage** to load the labels from the current montage
 - Verify the labels for the DC channels (those labels will be visible in Montage Editor)
- Verify that the cable from the CPAP or other device output is plugged into the selected DC input on the Connex Base Unit (2 channels DC5..DC6 are in the front and 4 additional channels DC7..DC10 are in the back)
 - It is not recommended to use the DC channels on the Connex patient breakout (DC1..DC4) with permanent devices such as CPAP
- Verify that the cable from the CPAP, or other device, output is plugged into the selected DC input on the Connex Base Unit
- Turn on the power to the CPAP unit
- Begin a mock collection without a patient attached
- Follow the manufacturer's directions to set the CPAP or other external unit to its calibration mode and for the suggested high and low values to be used during calibration. Set the device for the high calibration output
- In SleepWorks, right click on the channel that is to be calibrated and select **Calibrate** from the drop down menu
The Calibration Tool will open (see Figure 2 below).
- Type the manufacturers suggested high value in the upper box under the Calibration Value
- Click on the first (upper) **Align** button in the Align Marker column
- Set the CPAP, or other device, to output the low calibration value
- Type the manufacturers suggested low value in the lower box under the Calibration Value
- Click on the lower **Align** button in the Align Marker column
- Click **OK**

In the example below, the high calibration value is 100 and the low is 0

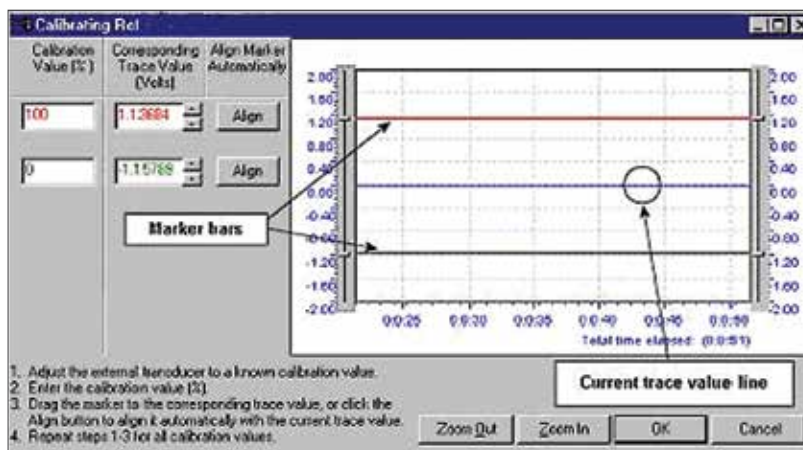


Figure 2 – Calibrating the DC Output

Helpful hints:

- Generic DC channel type cannot be used for external devices if calibration is required. The Generic DC channel type does not allow calibration to be performed on the external device – the option to calibrate will be disabled
- It is recommended that each system be set up uniformly by standardizing which DC channels used with which device, for example: CPAP Flow used with DC7, CPAP Pressure used with DC8 and CO₂ used with DC9

Healthcare solutions with one thing in mind. You.

©2020 Natus Medical Incorporated. All Rights Reserved. All product names appearing on this document are trademarks or registered trademarks owned, licensed to, promoted or distributed by Natus Medical Incorporated, its subsidiaries or affiliates. 025932 Rev 02

natus

Natus Medical Incorporated

natus.com