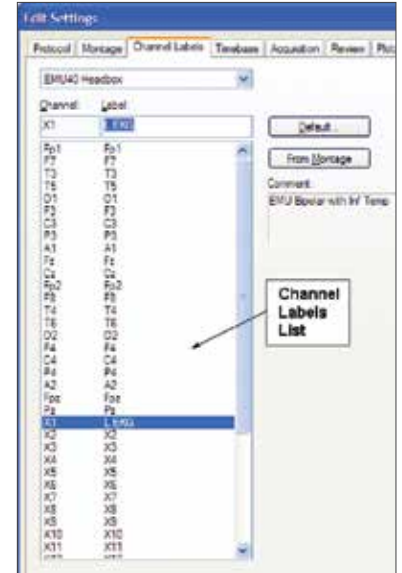


Montage editor

Before creating a new montage, any additional channels that are not part of the 10-20 system (EKG, EOG, EMG, T1 & T2, etc.) that are to be applied and placed in auxiliary locations in the head box should be identified using the **Channel Labels** page.

Channel labels

- Open the NeuroWorks or SleepWorks application
- Select **Edit→Settings** from the menu
- Click **Channel Labels** tab to switch to the **Channel Labels** page
- Select the type of headbox to be used with the montage so that the correct channels will appear in the list
- Highlight the desired channel
 - Note that the Channel and Label boxes will then be populated with the highlighted channel information – hardware **Channel** on the left and editable **Label** on the right
- Type the new Label identifier in the box provided
 - For example: Select X1 channel, change the label to **L EKG**
- Click **Apply** to save the new custom labels



Apply custom labels to a montage

- Click the **Montage** tab to switch to the **Montage** page
- Select the montage to which you want to apply the labels
- Click the **Apply Custom Labels** button to transfer the labels to the montage

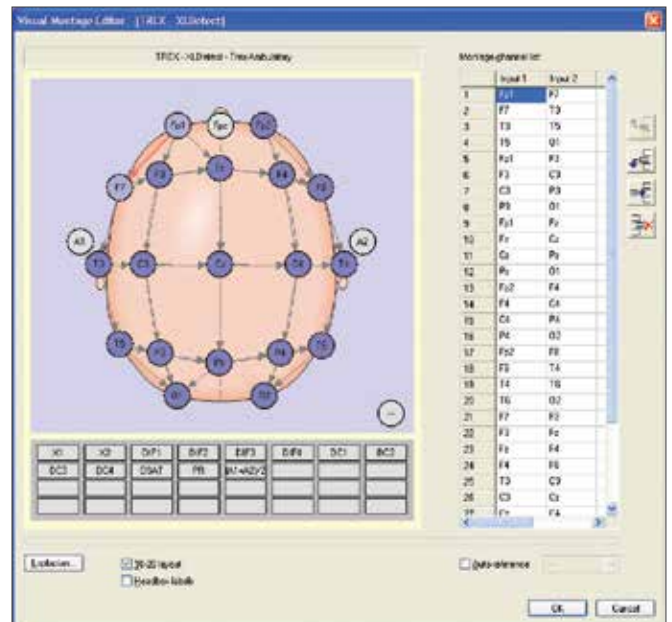
IMPORTANT: Montages are created for specific headbox types

Create a new montage

- Choose **Edit→Settings** and switch to **Montage** page
- On the right side of Montage Editor click the arrow on the **New** button to select the type of new montage to be created
- A message will appear verifying the headbox type for which the montage is to be created. If incorrect – change the headbox type
- Click **OK** to continue

Visual montage editor

- Click the **Visual Editor** button
- Connect bipolar inputs by clicking on "From" channel and drag to the "To" channel
- For referential montages, click to place a check mark in the box next to **Auto-Reference** then select the appropriate reference, allowing you to populate montage channels by simply clicking channel names on the 10-20 head image
- Adjust the order of channels by using the **Up** and **Down** arrow buttons
- When finished, click **OK**
- Name the montage and press **Enter** on the keyboard or unclick the **Rename** button



Continued on back page

Montage editor table

- Right-click in the desired cell to modify channels, type, filters settings, gain, color, detection type, polarity and gridlines
- Under Channels click **Append** to add channels to the end of the montage
- Under Channels click **Insert** to add a channel above the selected cell
- Under Channels click **Delete** to delete selected (highlighted) channels

Save a montage

- Click the arrow beside the **Save (Location)** button to select a location in which to save a montage
 - **Save (Local)** to save the montage to the local station (not shared with other stations)
 - **Save (Common)** to save to a directory that will be shared with other stations
 - **Save (Patient)** to save the montage along with the Patient record in the Natus Database – The montage will be available when additional studies are recorded for the same patient (using Returning function in Natus Database)



Set a new default montage for acquisition

- Select **Edit→Settings** and switch to the **Montage** page
- Select the desired montage from the **Name** list
- Click **Set as Default**

Montage conversion tool (import/export)

The Montage Conversion Tool is used to convert a montage originally created for one headbox type (e.g. Embla NDx) to work with a different headbox type (e.g. Natus Brain Monitor).

NOTE: Channels that do not have exact match in target (current) headbox will not carry over to new montage

New (import)

Use this option when you are acquiring a study and do not have a montage for the currently used headbox, but a similar montage already exists – although for a different headbox

- Start acquiring a study
- Select **Edit→Settings** and switch to the **Montage tab**
- Click **New (Import)**
- Select the source headbox type and the source montage and click **OK**
- Name the newly imported montage
- Save the newly created montage as necessary
- Click **Apply** to switch to the new montage

New (export)

Use this option after creating a **new montage** for one headbox (e.g. Trex) that will be made available for other headboxes

- Open the NeuroWorks or SleepWorks application
- Select **Edit→Settings** and switch to the **Montage tab**
- All montages for all headbox types will be shown if no study is open
- Select the source montage from the list
- Click **New (Export)**
- Select the target headbox type
- Click **OK**
- Save the newly created montage as necessary

Healthcare solutions with one thing in mind. You.

©2020 Natus Medical Incorporated. All Rights Reserved. All product names appearing on this document are trademarks or registered trademarks owned, licensed to, promoted or distributed by Natus Medical Incorporated, its subsidiaries or affiliates. 025934 Rev 02

natus

Natus Medical Incorporated

natus.com