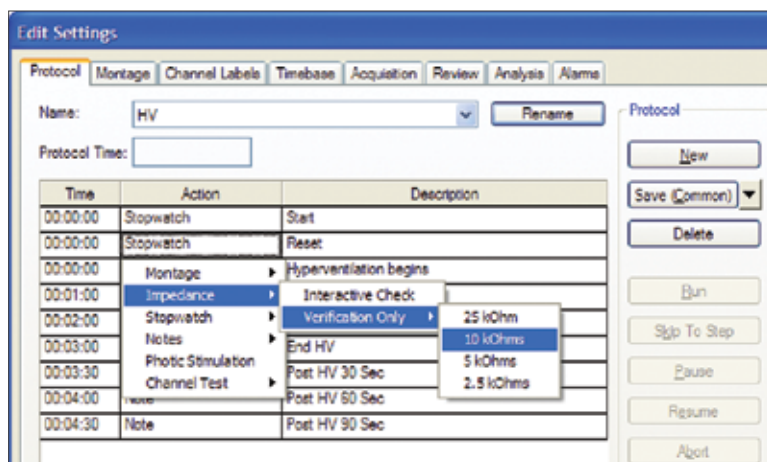


Protocols

A Protocol is a customizable set of actions that is set up to be executed in sequence. Common examples of protocols include Photic Stimulation, Hyperventilation, Impedance Check and Channel Test. Once established, a protocol can be named and saved. Then, it can be activated from the Protocol menu. The easiest way to create a new protocol is to copy an existing protocol and make changes to it as needed.

Create a new protocol

- Open the NeuroWorks application
- Select **Edit→Settings** from the menu
- Click **Protocol** tab to switch to the Protocol page
- Select a similar protocol that you will copy (if possible)
- Click **New** button (the top button on the right)
- Type a new name for the protocol into the **Name** combo box and press **Enter** on the keyboard or unclick **Rename** button to the right of the name
- The new protocol name appears in the **Name** combo box menu
- Make changes to the steps in the protocol list using one of the buttons in the Step section of the **Protocol** tab: **Append**, **Insert**, **Modify** or **Delete**



Append or insert a step in a protocol

- Click the **Append** or **Insert** button in the **Step** section
- Select an action from the drop-down menu
- The selected action is appended to the end of the list of steps or inserted before the selected step

Modify a step in a protocol

- To modify the time click the cell in the **Time** column for the row of the step to be modified and type in the desired time when this step will start (from the beginning of the protocol sequence)
- To modify the action, right-click cell in the **Action** column for the step to be modified and select the desired action from the list
- To modify a description (usually additional parameters for the selection action), right-click the cell in the **Description** column and select the desired action from the list

Delete a step from a protocol

- Click a cell in the step you want to delete and click the **Delete** button

Save a protocol

- Use the **Save (Common or Local)** button
- Click the arrow beside the **Save (Common or Local)** button to see the drop-down menu locations that are available for saving the protocol (common to share with other stations, local to save locally on the current station)

Healthcare solutions with one thing in mind. You.

©2020 Natus Medical Incorporated. All Rights Reserved. All product names appearing on this document are trademarks or registered trademarks owned, licensed to, promoted or distributed by Natus Medical Incorporated, its subsidiaries or affiliates. 025935 Rev 02

natus

Natus Medical Incorporated

natus.com