

# Initial setup and post study data transfer

## Starting an ambulatory study

- Insert new batteries into the ambulatory headbox
- Prepare the patient and attach electrodes
- Open the Natus Database
- Click the **New** button
- Fill in the patient's name and other information in the Patient Information dialog
- Click **Start**
- Click the **Start Recording** button
- To check impedances, click the **Check Impedance** button
- Select **Controls**→**Start Ambulatory Study** from the menu
- Click **Yes** to begin ambulatory collection
- The ambulatory study is now recording onto the flash memory of the Trex
- Disconnect the USB cable from the headbox and assemble the equipment on the patient



Start



Start Recording



Check Impedance

## After the patient returns

- Connect the computer to the Trex with the USB cable
- Open the Natus Database and choose **Tools**→**Ambulatory Manager**
- Choose **Headbox Connected to USB** from the Select Headbox dialogue box and click **OK**
- To stop the current study, click **End Study**
- To upload the study into the database, highlight the study name and click **Upload Study**

**NOTE:** A message will appear to tell you when the upload is complete

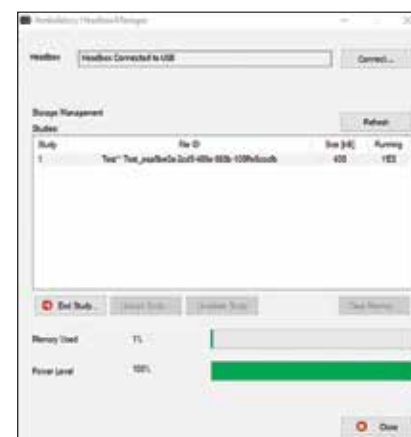
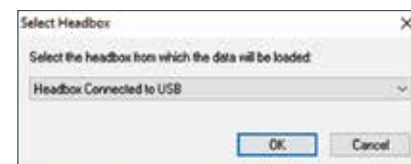
- Click **OK**
- Before using the Trex with another patient, the memory must be cleared by clicking the **Clear Memory** button

### Note:

- To set the Trex to start recording once USB cable is unplugged:
- Open Natus NeuroWorks or Natus SleepWorks
- Select **Edit**→**Settings**→**Acquisition** in the menu
- Check "**Start ambulatory study when HB disconnected**"

## Recommended frequency and channel settings

- The **Sampling Frequency** should be set to 200 Hz
- In **Channel Status**, turn off all channels that will not be used including OSAT and PR if oximeter is not used (to conserve battery)



## Healthcare solutions with one thing in mind. You.

©2020 Natus Medical Incorporated. All Rights Reserved. All product names appearing on this document are trademarks or registered trademarks owned, licensed to, promoted or distributed by Natus Medical Incorporated, its subsidiaries or affiliates. 025937 Rev 02

# natus

Natus Medical Incorporated

natus.com