

# Review

## Open study

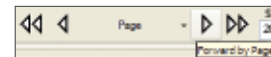
Select the patient from the database list and either double-click it or click the **Review** button.



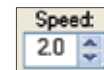
Review Button

## Navigate study

The arrow keys on the keyboard or the paging buttons on the **Review** toolbar can be used to advance pages. The single arrows advance one page at a time forward and backward. To start the automatic paging, press the **Spacebar** or use the **Double Arrows**. To stop the study movement, press the **Spacebar** again or click the **Double Arrow** again.



Select appropriate navigation mode (by page or by event) and **Playback Speed** (pages or events per second) using controls on the **Review** toolbar.



## Change montage

Select a different montage by right-clicking on the Wave screen (on the signal traces) and then selecting appropriate montage from the menu. To change individual channel properties press the **Montage** button on the **Montage** toolbar to open the montage properties and use the montage editor to change montage.



Montage Button

## Enter comments

**Pre-programmed comments** may be entered during the recording by clicking the buttons on the **Note** toolbar.



**Free text** notes can be entered by typing on the keyboard.

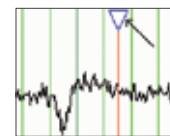
## Change Filters / Sensitivity / Timebase



Filters and sensitivity can be changed using the **Montage** toolbar. If the correct setting is not available from the dropdown then the desired value may be typed directly into the field. The timebase (or "page size") may be adjusted by clicking the dropdown arrow next to the setting and choosing from the available timebases.

## Pruning

To cut out sections of the study for physician review or remove unwanted sections of the video the pruning function can be used. To start a clip first drag the red hairline cursor to the desired location by the triangle "handle".

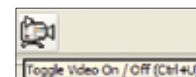


Click the **Start Marking Clip** button and enter a comment about the clip. To end the clip, place the cursor in the desired location and click the **End Marking Clip** button. Repeat this until all desired clips have been selected. To create a pruned study, click the **Edit Clips** button. Check the clips that are needed and click **Prune**. You will be prompted to decide if you want to cut out the sections and put them in a new study or remove the video from the sections that were not selected.



## Review video

To review video, click the **Camera Button** on the **Review** toolbar. This will toggle the video display off and on. Video can be played back in real-time as well as slower or faster than real-time using the double paging arrows (in **Page Navigation Mode**).



## Healthcare solutions with one thing in mind. You.