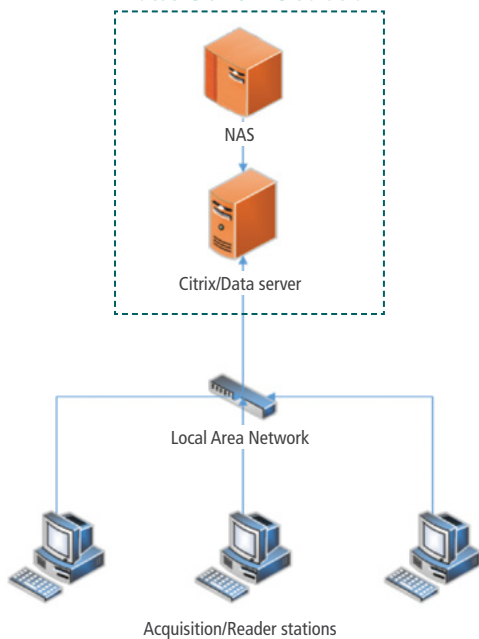




## Secure remote access and storage of your data

### Natus Citrix/NAS solution



### What is a Citrix NAS Server?

The Citrix Network Attached Storage (NAS) solution from Natus provides an economical and easily-scalable solution for robust remote access and data storage. Via the Citrix application, patient data is accessible from anywhere using any compatible device connected to your network. Data stored on the server can be protected by security protocols.

### Citrix NAS Server provides:

- Easy, secure and remote access to patient data located on your network
- Secured data is stored locally at your facility without the need for 3rd party involvement
- Offers a low-cost solution with no additional per-study fees
- 16TB data storage capacity\*
- Up to two users accessing data on the server simultaneously
- Desktop computer with monitor can function as an extra review station



\*Set up for RAID Array 1 redundancy, operational storage capacity 11TB.

# natus®

The Citrix NAS Server from Natus leverages your clinic network and connectivity infrastructure to provide an all-in-one remote access and storage solution.

#### Natus professional services is responsible for the following:

- On-site Installation of physical components
- Remote configuration of Natus software applications
- Planning discussion with IT representative

#### Your clinic is responsible for the following:

- Providing network infrastructure and connectivity
- IT representative/resource available during planning and implementation

#### Infrastructure:

- 1 GB/sec connection recommended for server and client systems on LAN
- Public IP access and netscaler configuration must be provided by clinic IT if remote reading option desired

#### Ordering Information

Part Number	Description
CITRIX-NAS-SERVER	Citrix Server & NAS Storage (up to two concurrent users, 16TB)
CITRIX-NAS-SERVER-HDM	Citrix Server & NAS Storage for Trex Monitoring (up to two concurrent users, 16TB)

#### What's included:

- Dell PowerEdge Server with Windows Server 2016 OS
- Citrix XenApp v7.15 (1 Year License)
- NeuroWorks/SleepWorks software for Citrix
- 16TB Buffalo TeraStation NAS
- 24" Monitor

#### Specifications

CPU	Intel Xeon E-2124 @ 3.3Ghz, 8GB Cache
Memory	16GB DDR4
Storage	4TB HDD, DVD+/w Drive
Networking	2x 1Gbps Onboard NIC, 1x 1Gbps PCIe NIC
Display	24" LCD
Software	Embedded Windows Server 2016 standard with five user CLA, Citrix XenApp 7.15 with two user licenses, Microsoft SQL Server 2014 Express, NeuroWorks Citrix Review license



To learn more about Natus products contact your local distributor or sales representative.

US Customers Call: **1-800-356-0007**

International Customers Call: **+1-608-829-8500**

US customers can also visit our online store:  
**[natusmedicalstore.com](http://natusmedicalstore.com)**

**Healthcare solutions with one thing in mind. You.**

©2020 Natus Medical Incorporated. All Rights Reserved. All product names appearing on this document are trademarks or registered trademarks owned, licensed to, promoted or distributed by Natus Medical Incorporated, its subsidiaries or affiliates. **031400 RevB**

**natus**®

Natus Medical Incorporated

**[natus.com](http://natus.com)**