



Proven integration, rapid intervention



MSDS



CMS



ICMS



Hearing



EDT/SRV



Healthcare
services

Quality indicators

The proposed Neometrics NewSTEPs Utility will provide reporting on the eight (8) Quality Indicators noted by the Newborn Screening Data Repository and Technical Assistance Program.

- **Quality indicator 1:** Percent of dried blood spot specimens that were unacceptable due to improper collection and/or transport
- **Quality indicator 2:** Percent of dried blood spot specimens with at least one missing state-defined essential data field upon receipt at the lab
- **Quality indicator 3:** Percent of eligible newborns not receiving a newborn screen, reported by dried blood spot or point-of-care screen(s)
- **Quality indicator 4:** Percent of infants that have no recorded final resolution (confirmed diagnosis or diagnosis ruled out by an appropriate medical professional) with the newborn screening program
- **Quality indicator 5:** Timeliness of newborn screening activities
- **Quality indicator 6:** Percent of infants with an out-of-range newborn screen result requiring clinical diagnostic workup reported by disorder category
- **Quality indicator 7:** Percent of disorders detected by newborn screening with a confirmed diagnosis by an appropriate medical professional
- **Quality indicator 8:** Percent of missed cases, reported by disorder



Reporting

Implementation of the Neometrics NewSTEPS Reporting Utility will allow the State to generate the reports as needed from the current database. This utility will allow for the creation of the reports in a fraction of the time that would be required by the State without the utility. The utility provides for the creation of extracts for Quality Indicators 1 through 8. The utility will allow current staff to generate the reports without an in-depth knowledge of the database structure or advanced knowledge of a database query language or ODBC compliant ad hoc report generator.

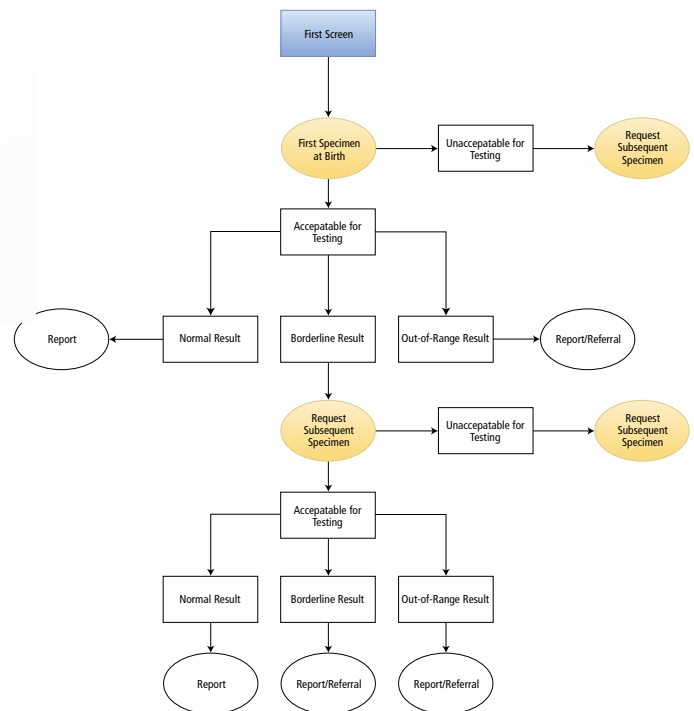
Training

Natus provides a formal training course on the Neometrics NewSTEPS Utility (NNU). Training associated with the NNU includes:

- Webinar training
- Training documentation
- System documentation

Key features

- The NNU enables Newborn Screening Programs to report on Quality Indicator data collected in your Neometrics Data Management Systems and used for monitoring Newborn Screening Program performance.
- The NNU also provides the required reporting to the Newborn Screening Data Repository and Technical Assistance Program as noted in the funding opportunity, HRSA 18-125, from the Health Resources and Services Administration.



NewSTEPS Report

Enter Date of Birth Range:

From:

To:

Enter Date Collected Range:

From:

To:

Enter Date Received Range:

From:

To:

Quality Indicator:

ID	Description	Value
1a	Due to improper collection	0.02
1b	Due to improper transport	100.00

Figure 1. Screenshot of reporting utility. Quality Indicators monitor the performance of the newborn screening testing process from infant birth through the follow-up process.

Reference: "Newborn Screening Quality Indicators", quality_indicator_source_document_july_17_2018_se.pdf, NewSTEPS, Association of Public Health Laboratories (APHL), p27, www.newsteps.org/quality-indicators, Accessed 2 Aug. 2018.

Healthcare solutions with one thing in mind. You.

©2020 Natus Medical Incorporated. All Rights Reserved. All product names appearing on this document are trademarks or registered trademarks owned, licensed to, promoted or distributed by Natus Medical Incorporated, its subsidiaries or affiliates. 025640-001B

natus

Natus Medical Incorporated

natus.com