

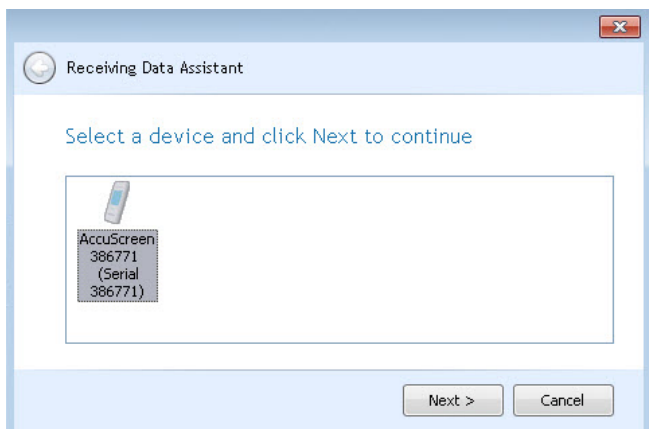
Exporting Data from AccuLink: Oz7

Data from the Accuscreen can be imported from the device into the AccuLink software and then exported to Oz7.**

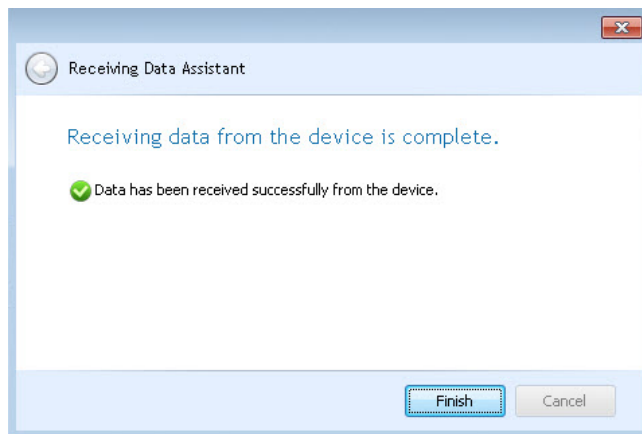
1. Once all babies have been screened, place the AccuScreen device into the docking station. The docking station must be plugged into power and connected via USB cable to the computer with the power and USB indicator lights on the docking station green.
2. Launch the AccuLink Software, entering your user name and password.
3. From the Patient and Tests tab click on the "Receive" icon:



4. Click on the AccuScreen icon and select "Next":



5. The import of the test data will proceed automatically and the following message should appear when the import is complete. Click "Finish."



6. The imported patient data should appear as shown below:

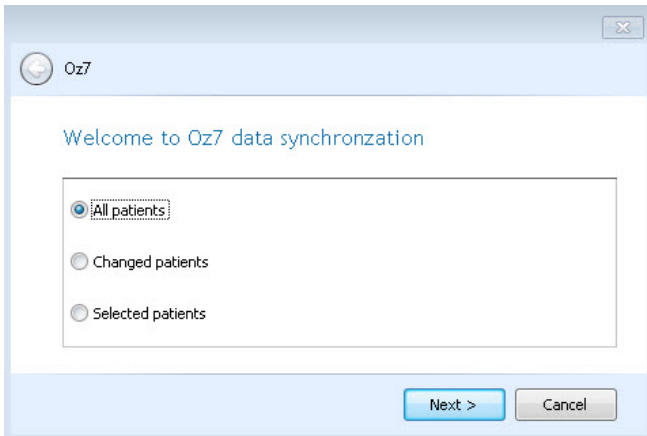


**Note: It is assumed that the AccuLink software was installed with Oz7 as the selected Data Link during the installation.

7. Click on the Export Icon and Export Data Icon:

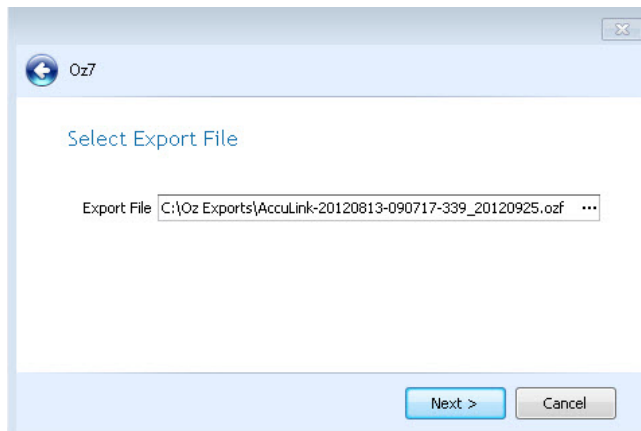


8. Select the type of Export desired:



All patients: will export all patient and test data from AccuLink.
Changed patients: will export all patients and test data from AccuLink that have changed since the last Oz7 export.
Selected patients: will export patients that are selected in the patient test browser, together with all of their tests.

9. Click Next:



If the Export File window is blank, you can set up the default file location and folder name by clicking on the "..."
 You can also change the export file location from this window.

10. When the export is complete, the following message will appear:

