

## The $N_1$ - $P_2$ Cortical Auditory Evoked Potential in threshold estimation

*Guy Lightfoot, Ph.D.*

### Bio:

Guy Lightfoot, Ph.D. obtained his first degree in Physics then an MSc in Audiological Science in the 1970s before doing his PhD on the effects of repetition rate on the neurological ABR. Since 1976 he has developed and managed an adult diagnostic audiology service at the NHS Royal Liverpool University Hospital, UK, taking a special interest in electrophysiology, vestibular assessment, teaching, instrumentation & calibration. For the last 18 years he has organized and contributed to a highly successful annual ERA & OAE training course. He is currently active in establishing national protocols, staff training and quality assurance of ABR testing for the English newborn hearing screening program. Guy has an enduring interest in CAEPs and has long campaigned for manufacturers to provide efficient software for this underused test. His non-commercial educational resource web site can be found at: [www.corticalera.com](http://www.corticalera.com)



1960s using analogue computers and later in the 1970s when digital computers became widely available. Referred to at the time as the Slow Vertex Response, Hallowell Davis and colleagues pioneered the use of CAEPs in a clinical setting.  $N_1$  &  $P_2$  are thought to have multiple generators in Heschl's gyrus (auditory cortex), and have latencies of 100-160 ms and 160 – 270 ms respectively, depending on the sensation level of the stimulus. The  $N_1$ - $P_2$  amplitude is typically 10-15  $\mu$ V for louder stimuli, reducing as threshold is approached. It is thought that  $N_1$  reflects the detection of a change in the acoustic environment. Like the ABR therefore, it can be considered as an onset response.

### Clinical utility

The use of the  $N_1$ - $P_2$  CAEP response in the estimation of hearing sensitivity is well established, with most studies suggesting that threshold estimation in adults is accurate within 10 – 20 dB. For example, Lightfoot and Kennedy (2006) identified a mean audiometric / electrophysiological threshold difference of 6.5 dB, after correction of which 94% of threshold estimates were within 15 dB. That's better than most estimates of adult ABR accuracy. Our study revealed that the test can be time-efficient with appropriately designed software that automates predictable manual tasks such as waveform manipulation: threshold estimation at three frequencies in both ears took an average of 20.6 minutes. With standard evoked potential software the test

### Background

The  $N_1$ - $P_2$  complex was the first cortical auditory evoked potential (CAEP) to attract substantial research interest, initially in the mid-

does take longer, principally because the user has to manually control the creation of grand averages, waveform manipulation, etc. Probably the most significant clinical limitation of the  $N_1$ - $P_2$  response as an audiological tool is its late maturation, extending into the late teenage years, though the technique remains viable in older children (Stapells, 2002). It is not appropriate for audiological use in infants, for whom the ABR (in its transient or 80 Hz ASSR guise) is a superior instrument because of earlier maturation of the relevant response generators. Devotees of the cortical response will know that the infant  $P_1$  (which is probably fused with the  $P_2$  response at that age) can be recorded at supra-threshold stimulus levels but that response cannot be used to reliably estimate auditory sensitivity.

#### **Disadvantages over the ABR**

- Adults & older children only
- Time & laborsaving software not yet available

## So, why is this response almost unknown?

The  $N_1$ - $P_2$  response has been criticized for its variability and susceptibility to the effects of subject drowsiness (Näätänen, 1992). Indeed some texts on auditory evoked potentials appear to dismiss the technique as a viable audiological test (McPherson, 1966; Hall, 1992) perhaps because less than optimal test parameters have led to poor test performance. This is probably why the technique has not been widely used or taught, with tone burst ABR usually being the preferred method in many countries. The  $N_1$ - $P_2$  response does appear to be poor in a small proportion of individuals, with results overestimating the threshold by 20 dB or more. The resulting lack of clinical demand has stifled software development by equipment manufacturers. In contrast, Hyde (1997), Stapells (2002) and Martin et al. (2007) considered it to be the test of choice for threshold estimation of most older children and adults. Interestingly, individuals exaggerating their audiometric thresholds often give better responses than honest subjects, especially for stimulus levels that are audible but below their volunteered thresholds. This is thought to be associated with heightened cortical arousal level for these stimuli, which are seen as a threat. As with the ABR, the accuracy of threshold

prediction increases for individuals with a recruiting hearing loss, the steeper response input-output function seen in such cases yielding larger amplitude responses than non-recruiting or normally hearing individuals at stimulus levels just above their threshold. In some countries (e.g., the UK) the test is established by legal case law and government military pension schemes as the ultimate objective arbiter of hearing status.

## $N_1$ - $P_2$ response characteristics & the practicalities of recording

The response can be evoked by the relatively abrupt onset (or offset, or change) of an auditory stimulus. Frequency-specific stimuli are desirable for audiological applications and that usually means a tone burst. The amplitude of both ABR and CAEP responses are larger for stimuli with a more abrupt onset but a short rise time and duration limits frequency specificity. For the ABR, a commonly accepted compromise between these competing requirements is a 2:1:2 cycle (rise/plateau/fall) tone burst. A rise time substantially longer than a couple of milliseconds “smears” the ABR in time because ABR latencies are so short. We can see that effect in the 500 Hz ABR: a rise time of 2 cycles at 500 Hz is 4 ms which is substantial compared to the Wave V latency and we usually see a rather ill-defined ABR as a result. The much longer latencies of the  $N_1$ - $P_2$  complex gives us the freedom to use longer stimulus rise times; a typical value being 10-20 ms. Stimulus plateau is typically 60 ms (see Frequency Conversion Table and Trial Settings). By that time the response either will or will not have been evoked so there is

#### **Advantages over the ABR when testing adults**

- Better threshold accuracy
- More frequency-specific
- Response morphology does not degrade at low stimulus frequencies
- Potentially quicker than the ABR (with appropriate software)
- Tests more of the neural pathway
- No patient relaxation needed

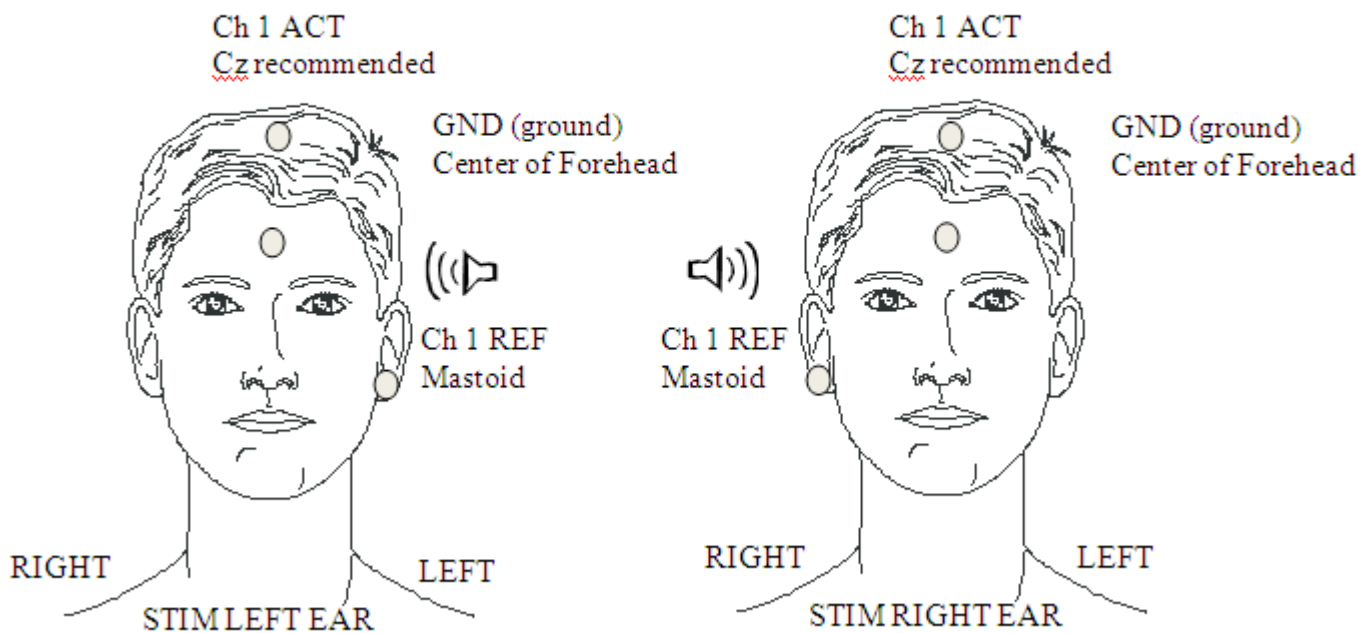
little merit in extending the duration of the stimulus beyond this value. One of the advantages of the  $N_1$ - $P_2$  response is therefore the almost ideal frequency specificity it provides, allowing steeply sloping or notched audiometric contours to be resolved. Unlike the ABR, the morphology of the  $N_1$ - $P_2$  response is every bit as clear for low frequencies as for high frequencies. Response amplitude does decline at frequencies above about 3 kHz (see Figure 2a) but we found that threshold prediction at 8 kHz was no worse than at lower frequencies (our study used stimuli of 1, 3 & 8 kHz).

In addition to the excellent frequency specificity and good threshold precision, other advantages over the ABR include testing the integrity of a greater proportion of the auditory nervous system and the capability to employ speech-based stimuli.

For clinical threshold estimation a single recording channel is sufficient, with a Cz positive electrode site (a high forehead site will give a significantly attenuated amplitude) and a mastoid (either one, or linked mastoids) negative electrode site. Ground is conventionally placed on the forehead.

Filters of 1 Hz to 15 Hz provide the best signal to noise compromise when the response is used to estimate threshold; this is a much narrower bandwidth than one would use for research where waveform fidelity is important. The amplifier gain / artefact rejection setting should be such that incoming signals greater than about  $\pm 50 \mu V$  (e.g. 60%) are rejected. The choice of repetition rate is an interesting compromise: it takes about 10 seconds for the response to fully recover (Davis et al., 1966). A rate above 0.1 Hz will diminish the response amplitude, but faster stimulation allows more averaging and hence greater signal to noise ratio improvement per unit test time. A repetition rate of 0.5 to 1.0 stimuli per second is optimal. However, this means that the first few stimuli in an averaging sequence (preceded by silence) will evoke larger responses and as the averaging run continues the response amplitude will decline. Very long averaging runs are therefore counterproductive. At each stimulus level, typically two or three waveforms with 10 – 20 sweeps each are sufficient to identify a response at supra-threshold stimulus levels but 20 – 40 sweeps per waveform are usually needed close to threshold. Recording more than a single waveform allows us to assess response repeatability (by visual inspection and by

**1-CHANNEL CAEP  
ELECTRODE SWITCHING OFF  
Manually Switching Electrodes is REQUIRED**



computer correlation) and residual noise (as the average gap between replicates). For this process to be valid, the response should be stationary, i.e., not change with time. But we know that this response declines with time during an averaging run and can vary with the patient's level of arousal. These effects can be minimized in dedicated software by acquiring the 2 or 3 replicates pseudo-simultaneously or, less ideally, by manually ensuring that a silent period of at least 10 seconds separates the averaging runs. A recording epoch (time base) of 500 ms to 1000 ms is usual, the latter allowing some pre-stimulus activity to be recorded as an indication of background non-response electrical activity.

Unlike shorter latency responses which place high demands on muscle relaxation, CAEP subjects simply need to remain awake and reasonably alert during testing and this can readily be achieved by asking them to sit upright (not reclined) in a chair and browse a magazine or watch a silent video. Eye closure is to be avoided since this is associated with EEG alpha (8 – 12 Hz) activity which can contaminate the recording as well as increased drowsiness. Asking the subject to listen to or count the stimuli is unnecessary.

## Response identification

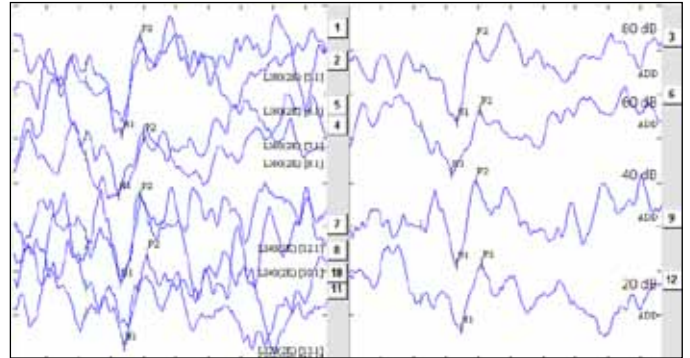
Although some objective assessment tools such as measurement of signal to noise ratio and cross-correlation are available on most evoked potential equipment, N<sub>1</sub>-P<sub>2</sub> response identification (like ABR response identification) is usually based on subjective judgment by the audiologist and is therefore vulnerable to operator error or bias.

Figure 1 illustrates N<sub>1</sub>-P<sub>2</sub> CAEPs at a number of stimulus levels. The stimulus was a 120 cycle plateau tone burst at 2 kHz with 20 cycle linear rise and fall times. See cortical protocol trial settings at the end of the document.

In Figure 1 the left panel shows replicated responses; the right panel shows the grand averages of the replicates. The manner in which response amplitude and latency change as stimulus level is changed is, for frequency-specific stimuli, quite predictable though influenced by the extent of any loudness recruitment present. Figure 2 (from Lightfoot and Kennedy, 2006) demonstrates input-output (I/O) functions for the N<sub>1</sub>-P<sub>2</sub> complex. Knowledge of these functions together with definite responses

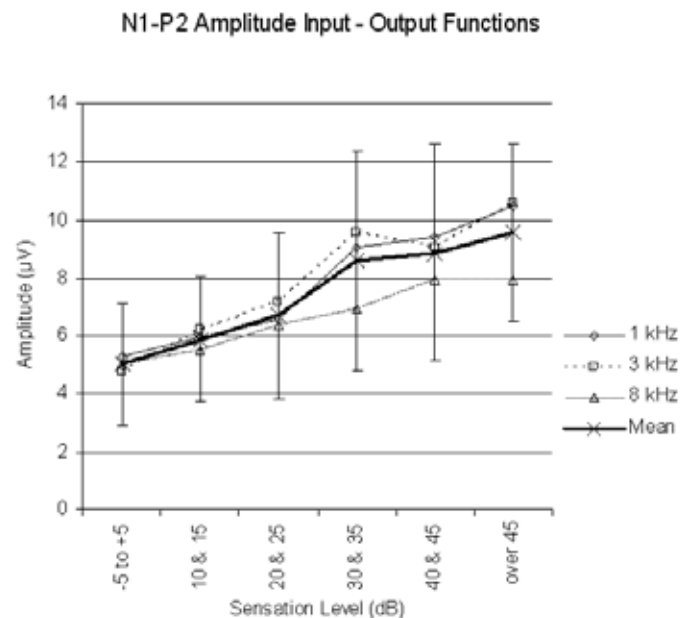
at supra-threshold test levels can be helpful in the correct identification of near-threshold responses.

**Figure 1: N<sub>1</sub>-P<sub>2</sub> intensity series**

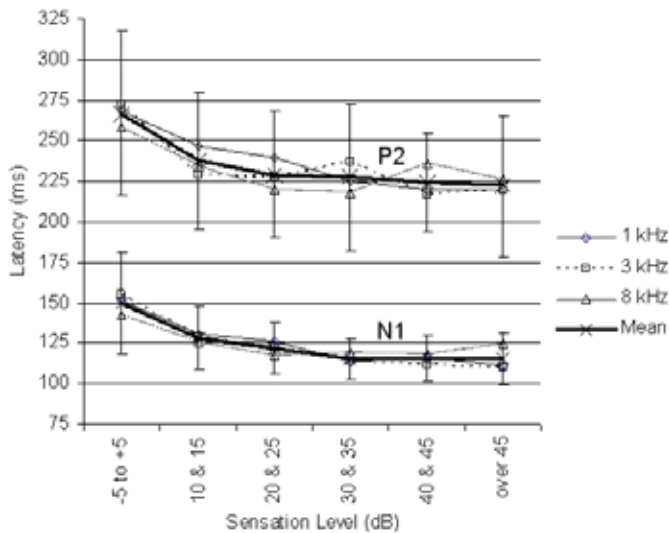


LATENCIES (ms)							
ALR							
Waveform	Ear	P1	N1	P2	N2	P3	N3
2	Left	***	100.00	151.00	***	***	***
3	Left	***	98.50	152.50	***	***	***
4	Left	***	89.50	161.50	***	***	***
6	Left	***	86.50	164.50	***	***	***
7	Left	***	95.50	151.00	***	***	***
9	Left	***	98.50	152.50	***	***	***
10	Left	***	106.00	169.00	***	***	***
12	Left	***	110.50	169.00	***	***	***

**Figure 2: Input-Output functions of the N<sub>1</sub>-P<sub>2</sub> CAEP for (a) amplitude; (b) latency. From Lightfoot & Kennedy (2006).**



### Latency Input - Output Functions



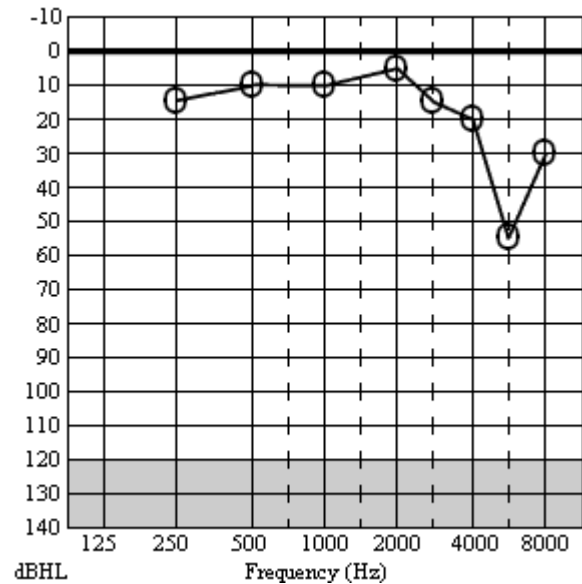
The appropriate identification of the lowest level at which a response is seen is only half of the threshold estimation process; the other is the highest level at which a response is absent. For the latter to be valid, not only must there be no obvious response but we also need to be sure that the recording conditions are sufficiently good to ensure that a small response is not obscured by residual noise. Note that there is an important distinction between not seeing an obvious response and being able to demonstrate that a response is absent. A maximum residual noise level criterion is therefore appropriate when defining response absence and for the  $N_1$ - $P_2$  response a value around 1.5  $\mu$ V is reasonable for this purpose. One way of assessing the residual noise is by superimposing replicates and then visually estimating the average gap between them, across the entire recording window. At points where the waveforms cross, the gap is zero (obviously) whereas at other latencies the gap will be a maximum. At stimulus levels where there is no obvious response present and the noise estimate is acceptably low, one can state with reasonable confidence that this stimulus level is below threshold. Of course it is possible that some recordings may fail to meet the acceptance criteria of either the response presence or response absence status. Examples include "probable" responses that have a signal to noise ratio below an acceptable value and "probably absent" responses where the residual noise level is above an acceptable value. Such waveforms must be graded as inconclusive and though tempting, must not be allowed to contribute to the process of threshold definition. This is equally true of ABR responses, though sadly, it is common for this issue

to be overlooked in clinical practice. Additional averaging, leading to a lower residual noise, is the most obvious means of resolving inconclusive waveforms.

## Case Study: Medico-legal noise trauma

Figure 3 is the audiogram of a 36-year-old telephonist

Figure 3



who wore her earpiece in the right ear and whose main complaint was that of right-sided continual hissing tinnitus following an incident in which her right ear received a very high level noise for a few seconds during equipment malfunction. She reported her hearing as reasonably good bilaterally (audiometric thresholds were  $\leq 20$  dB HL on the left). The authenticity of the 6 kHz threshold on the right (and by inference, the existence of the tinnitus) was questioned by the defendant and CAEPs were commissioned.

Figures 4 & 5 are the CAEP waveforms at 4 kHz & 6 kHz respectively. The dotted vertical line denotes stimulus onset. Full details of test parameters and procedure are given in Lightfoot and Kennedy (2006). The residual noise (RN) in each waveform is a function of the number of sweeps in each average and was calculated as the mean of the modulus of the differences between the sub-averages across the entire recording window. This is the

same as the subjective noise estimation method suggested above. At the highest stimulus level in Figures 4 & 5, only 15 sweeps were used (bold lines, showing the grand average of the three sub-averages which were the result of only 5 sweeps each) since the response was clear even in the presence of a moderately high residual noise. At lower test levels the declining response amplitude leads to a declining signal to noise ratio (S/N) and 30 sweeps were used to obtain a lower RN and hence a good S/N. Here, S/N was calculated as the  $N_1$ - $P_2$  amplitude divided by RN. At the sub-threshold levels 45 sweeps were needed to obtain a sufficiently low noise floor to ensure the response was absent.

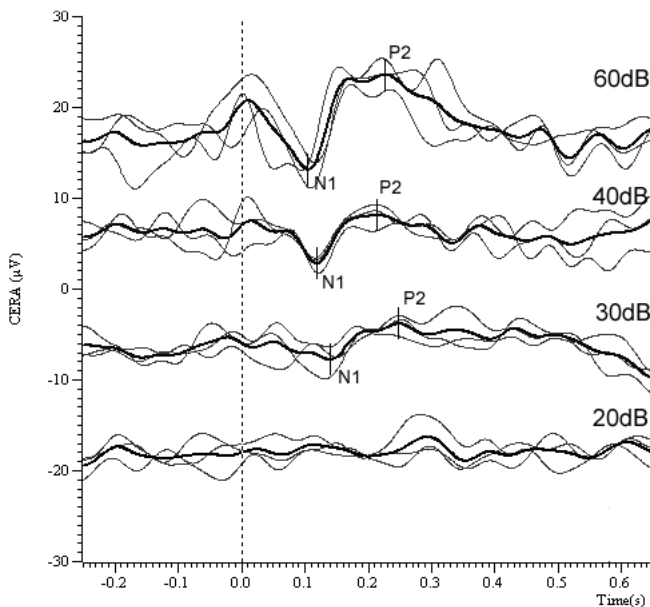
The author's system calculates the correlation between the sub-averages in the region of a suspected response (50 ms prior to where the system detects a potential  $N_1$  to 50 ms following a potential  $P_2$ ) and uses this correlation together with the S/N to derive a p-value (the likelihood of the response being spurious) for the response (Lightfoot, 2009). Note how in Figures 4 & 5 the p-values are very low for the supra-threshold responses, supporting the subjective visual interpretation that at these levels there are likely genuine responses. At 4 kHz there are unequivocal

responses at 60, 40 & 30 dB HL whilst at 20 dB HL the objective measures suggest there is no response. Subjectively it is tempting to grade this as a "possible response" but we must resist! The minor bump suggesting a  $P_2$  is predominantly from only one of the three sub-averages and is therefore probably just residual noise.

We employ a rule whereby if the amplitude of the lowest level response is  $>3 \mu V$  ( $>5 \mu V$  at 1 kHz or below) then the threshold is taken as 5 dB below this level. The CAEP result therefore predicts a threshold of 25 dB HL at 4 kHz, validating the audiogram. The 6 kHz responses suggest a threshold of 55 dB HL, in complete agreement with the behavioural audiogram. This is recruitment sharpening our precision. I just love recruitment!

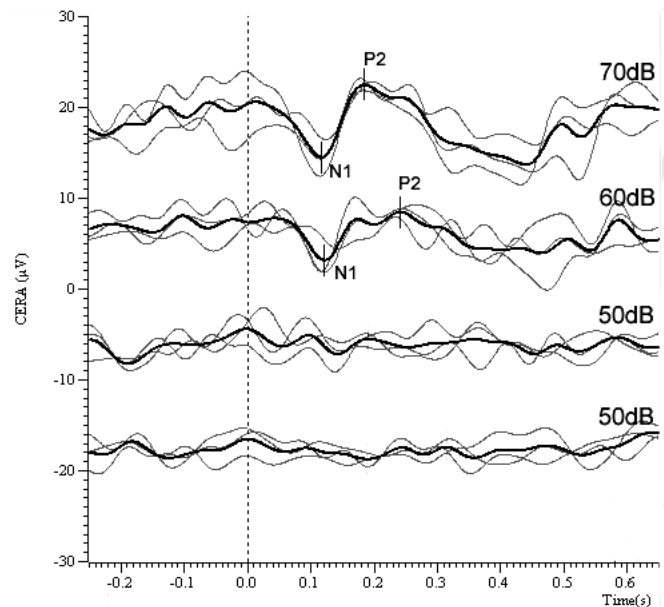
In this case, CAEP testing was able to confirm the presence of a fairly tight notch in the audiogram. Recall that a stimulus rise time of 10 ms was used. At 6 kHz that represents 60 cycles, not the 2 cycles used in ABR. It is unsurprising that this stimulus is sufficiently frequency-specific to probe such audiometric notches.

**Figure 4: Right ear 4 kHz CAEPs**

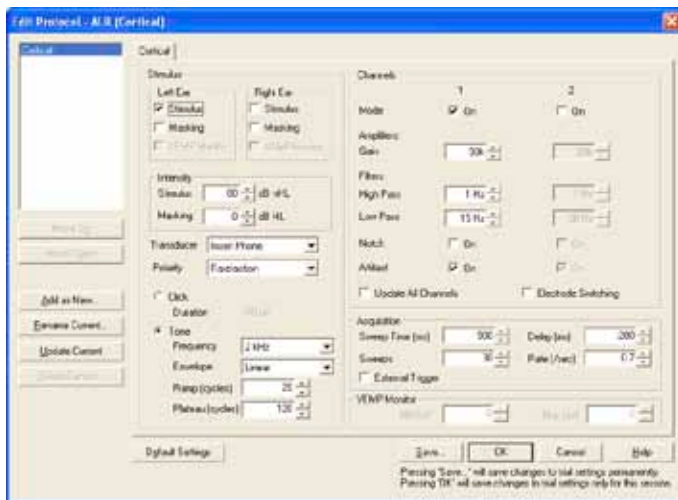


4kHz HL dB	RIGHT EAR SWPS (n)	STAT	N1 (ms)	AMP (µV)	CC	RN	S/N	p
60	15	Y	105	10.4	0.84	2.78	3.75	0.000
40	30	Y	119	5.3	0.80	1.94	2.73	0.003
30	30	Y	139	3.9	0.52	1.56	2.52	0.012
20	45	N	-	-	0.10	1.53	1.41	0.286

**Figure 5: Right ear 6 kHz CAEPs**



6kHz HL dB	RIGHT EAR SWPS (n)	STAT	N1 (ms)	AMP (µV)	CC	RN	S/N	p
70	15	Y	117	8.0	0.82	2.74	2.92	0.001
60	30	Y	122	5.3	0.36	2.10	2.53	0.017
50	30	N	-	-	-0.09	1.59	1.06	0.561
50	45	N	-	-	-0.15	1.47	0.90	0.702



**Artifact rejection set at 60% = +/- 50 uV**  
**Display Scale recommend 3.00 uV**

Frequency (Hz)	Ramp (rise/fall) 10 ms	Ramp (rise/fall) 20 ms	Plateau 60 ms
250	3	5	15
500	5	20	30
750	8	15	45
1000	10	20	60
1500	15	30	90
2000	20	40	120
3000	30	60	180
4000	40	80	240
6000	60	120	360
8000	80	160	480

**Milliseconds to Cycles Conversion Table at 10 ms (rise/fall), 20 ms (rise/fall) and 60 ms (plateau)**

## Closing remarks

The N<sub>1</sub>-P<sub>2</sub> CAEP is not without imperfections and limitations (most important is its inapplicability to infants) but it is a valuable component of the audiologist's toolbox. Its success in hearing threshold estimation lies in the use of appropriate test parameters, efficient procedure, and rigorous interpretation. If there is sufficient demand, I hope that equipment manufacturers will develop and provide labour & time-saving software – so let them know!

## References

- Davis, H., Mast, T., Yoshie, N., & Zerlin, S. (1966). The slow response of the human cortex to auditory stimuli: Recovery process. *Electroenceph Clin Neurophysiol*, 21, 105-113.
- Hall, J.W. (1992). *Handbook of auditory evoked responses*. Boston: Allyn and Bacon.
- Hyde, M. (1997). The N1 response and its applications. *Audiol Neurotol*, 2, 281-307.
- Lightfoot, G., & Kennedy, V. (2006). Cortical electric response audiometry hearing threshold estimation: Accuracy, speed and the effects of stimulus presentation features. *Ear Hear*, 27(5), 443-456.
- Lightfoot, G. (2009). Objective detection of the cortical N1-P2 response using signal to noise ratio. Oral presentation at the XXI Biennial Symposium of the International Evoked Response Study Group, Rio de Janeiro, Brazil.
- Martin, B.A., Tremblay, K.L., & Stapells, D.R. (2007). Principles and applications of cortical auditory evoked potentials. In R.F. Burkard, M. Don, & J.J. Eggermont (Eds.), *Auditory Evoked Potentials* (pp. 482 – 507). Baltimore: Lippincott Williams and Wilkins.
- McPherson, D.L. (1996). *Late Potentials of the Auditory System*. San Diego: Singular.
- Näätänen, R. (1992). *Attention and Brain Function*. Hillsdale, NJ: Lawrence Erlbaum Associates.
- Stapells, D. (2002). Cortical event-related potentials to auditory stimuli. In J. Katz (Ed.), *Handbook of Clinical Audiology* (5th Ed). Philadelphia: Lippincott Williams & Wilkins.

Otometrics is the world's leading manufacturer of hearing and balance instrumentation and software – innovative concepts designed to help healthcare professionals make the best possible decisions.

Our solutions range from infant screening applications and audiologic diagnostics, to balance testing and hearing instrument fitting. As an industry leader, we are committed to developing innovative, integrated solutions that help healthcare professionals make the best possible decisions.

● Hearing Assessment ● Fitting Systems ● Balance Assessment

**GN Otometrics, Europe.** +45 45 75 55 55. [info@gnotometrics.dk](mailto:info@gnotometrics.dk)  
**GN Otometrics, North America.** 1-800-289-2150. [sales@gnotometrics.com](mailto:sales@gnotometrics.com)  
[www.otometrics.com](http://www.otometrics.com)



**otometrics**

MADSEN • AURICAL • ICS