

Carefree probe tube placement

ProbeTube Assistant™

Probe tube placement can be a challenging part of the verification process. Placed too shallow, your measurements become inaccurate especially in the important high frequencies where matching the target can be difficult. Placed too deep you may touch the eardrum.

Now there is an easier way. The ProbeTube Assistant is a new FitAssist tool in the Aurical fitting system and Otosuite® software that takes the worry out of probe tube placement. With a dedicated button in the toolbar and accessed from anywhere in the PMM module, the ProbeTube Assistant guides you with onscreen instructions to the correct position of the probe tube.

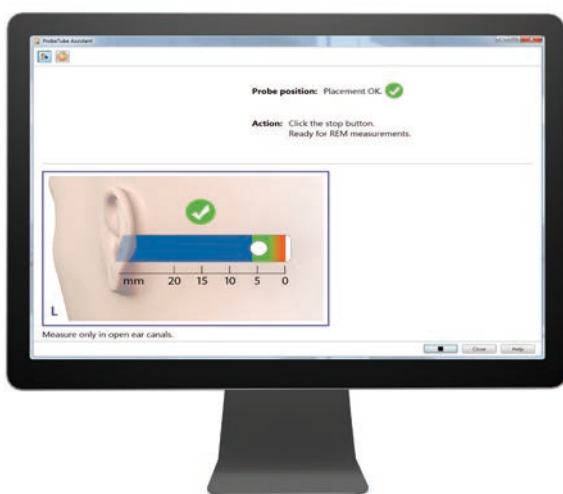
Accurate and easy to use, the ProbeTube Assistant and Aurical give you a carefree way to achieve better fittings and more satisfied customers.



Meet your new assistant

The ProbeTube Assistant™ is easy to use

After having placed the probe tube right after the first bend in the patient's ear, you can start the ProbeTube Assistant. Based on an ongoing measurement, the ProbeTube Assistant guides you in adjusting the probe tube to the optimal insertion depth. Once the probe tube is repositioned, it takes new measurements, and provides recommendations delivered in millimeters for additional adjustments. The insertion depth is shown visually on-screen and the Assistant tells you when you have reached the correct position.



Smart accessories ensure stable and accurate placement

Dedicated probe accessories support your probe tube placement whether it is done with the ProbeTube Assistant or manually according to recommended average distances. The selection includes:

- Earhook
- Probe tube holder
- Probe tubes with millimeter scale

The plastic earhook and probe tube holder help ensure that the probe tube stays in place, and probe tubes with an imprinted millimeter scale help guide you to the correct insertion depth of the probe tube.

Learn how you can add ProbeTube Assistant to your Aurical. Contact your local Natus representative today or visit hearing-balance.natus.com/aurical

KEY BENEFITS

With the new ProbeTube Assistant and Aurical you realize:

- Carefree probe tube placement
- Easier and more accurate real ear measurements and verification
- Smoother fitting workflow and improved fitting results
- More satisfied customers

A complete, modular fitting solution, Aurical encompasses audiometry, PMM, HIT, video otoscopy and a HI programming interface in one system. Hearing care professionals can use the modules independently or combine them as needed. This latest release demonstrates once again how Aurical continues to innovate – enabling hearing care professionals to realize greater efficiency gains while boosting the quality of counseling and care.



Healthcare solutions with one thing in mind. You.

©2020 Natus Medical Incorporated. All Rights Reserved. All product names appearing on this document are trademarks or registered trademarks owned, licensed to, promoted or distributed by Natus Medical Incorporated, its subsidiaries or affiliates. P/N 7-26-16800-EN/02.

natus®

Natus Medical Incorporated

natus.com