

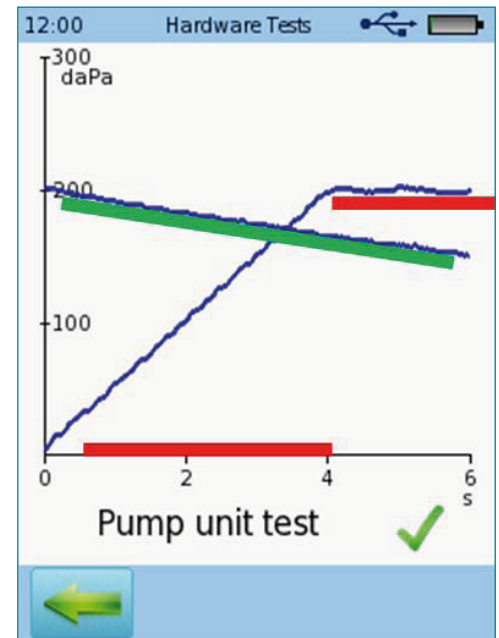
## Pump unit

### ▶ Getting started

- Place probe tip into the red probe cavity for the adult probe tip or the blue cavity for the infant probe tip
- Turn the device on
- Tap the tools icon
- Select (tap) Functional Checks
- Select Pump Unit Test

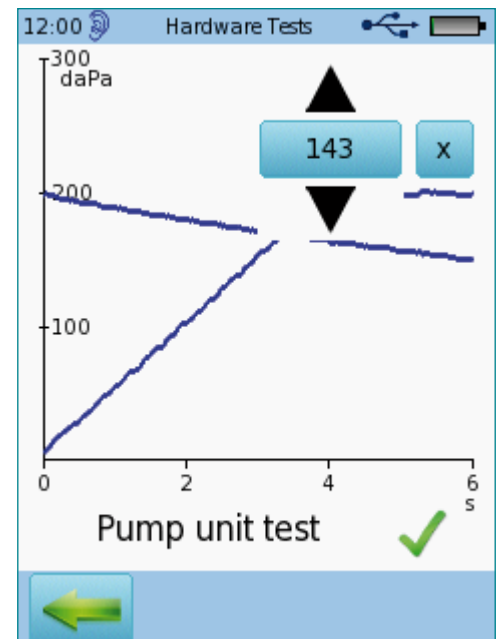
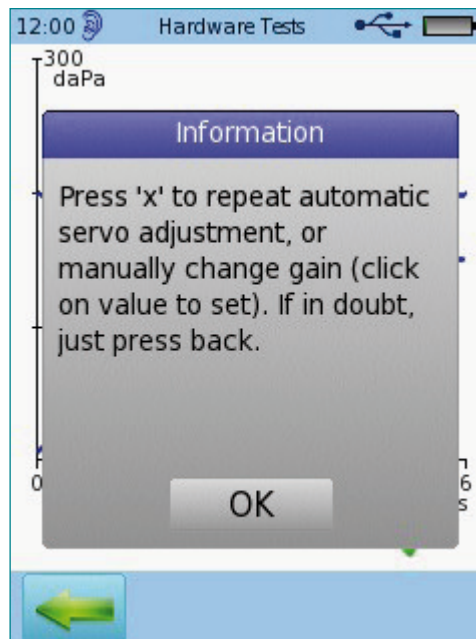
The **red lines** should be straight lines with no or just little oscillation or stairs effect.

The **green line** should ideally be horizontal (no pressure drop).  
With probe and cavity connected, some pressure drop is acceptable. If just testing the device with pressure outlet closed, there should be no pressure drop.



### ▶ Re-initialize pump unit

- Perform pump unit test
- After test is done, quickly tap on the graph 4 times
- Get "service menu"
- Press the 'x' button



Healthcare solutions with one thing in mind. You.

©2020 Natus Medical Incorporated. All Rights Reserved. All product names appearing on this document are trademarks or registered trademarks owned, licensed to, promoted or distributed by Natus Medical Incorporated, its subsidiaries or affiliates. 7-26-1378-EN Rev01

**natus**®

Natus Medical Incorporated

natus.com