

Setting up the OTOSuite Control Panel for AuditBase

The purpose of this document is to help set up the OTOSuite Control Panel for AuditBase.

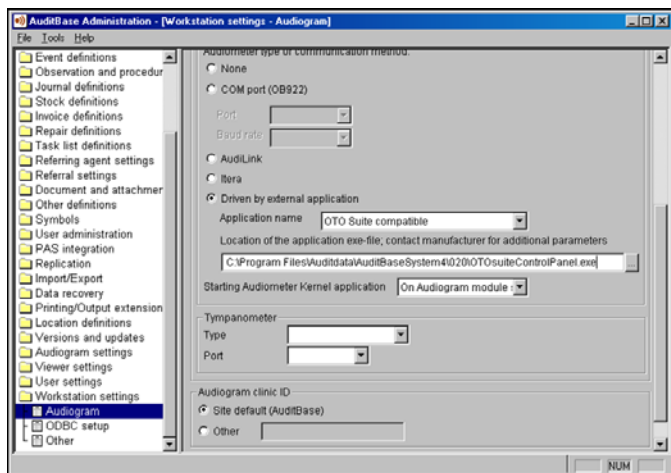
Prerequisites

1. AuditBase must be installed and configured correctly (see the AuditBase documentation).
2. OTOSuite must be installed.
3. The AuditBase client for OTOSuite must be installed.

Set up AuditBase to use the OTOSuite Control Panel

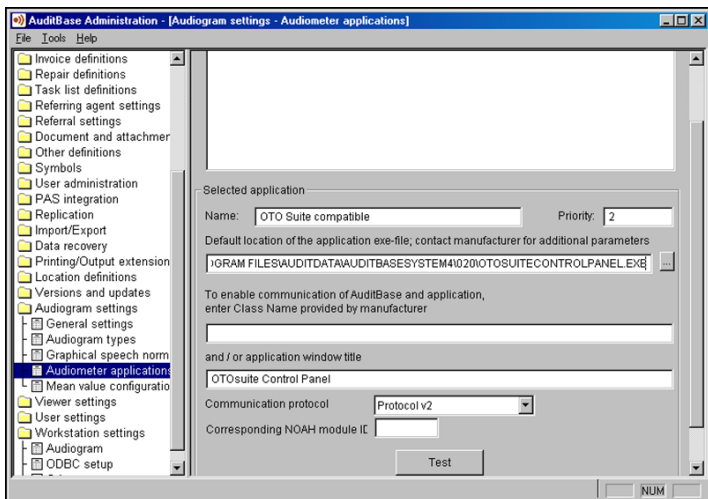
1. Start the AuditBase Administration software to configure use of the OTOSuite Control Panel.
2. Select **Workstation settings > Audiogram** in the left-hand panel, and set the location of the executable file for **OTOSuite compatible** to:

C:\Program Files\Auditdata\AuditBaseSystem4\020\OTOSuiteControlPanel.exe
(or where the OTOSuiteControlPanel.exe file is located).



3. Click the **Save** button.
4. Select **Audiogram settings > Audiometer applications**, and set the location of the executable file for **OTOSuite compatible** to:

C:\Program Files\Auditdata\AuditBaseSystem4\020\OTOSuiteControlPanel.exe
(or where the OTOSuiteControlPanel.exe file is located)



5. Click the **Save** button.

Set up OTOSuite

OTOSuite must be configured before the OTOSuite Control Panel can be used:

1. Start OTOSuite.
2. Connect to an audiometer.
3. Select **Audiometry > Tone test**.
4. Save as start-up settings.
5. *Make sure that you exit OTOSuite!*
6. Start OTOSuite. No dialogs must show during start-up.

Troubleshooting the OTOSuite-AuditBase integration

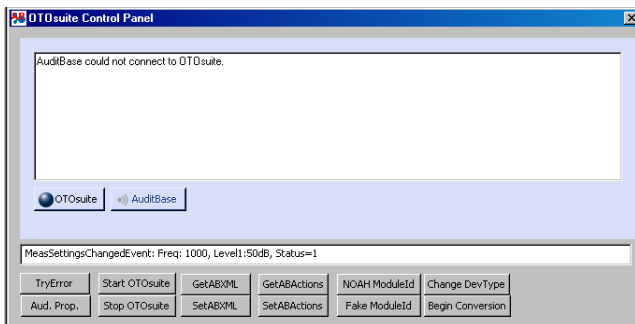
The OTOSuite-AuditBase integration consists of four parts:

1. OTOSuite (GN Otometrics)
2. AuditBaseClient (GN Otometrics)
3. AuditBase database (Auditdata)
4. AuditBase application (Auditdata)

OTOSuite and the OTOSuite Control Panel can be verified using the AuditBaseSimulator:

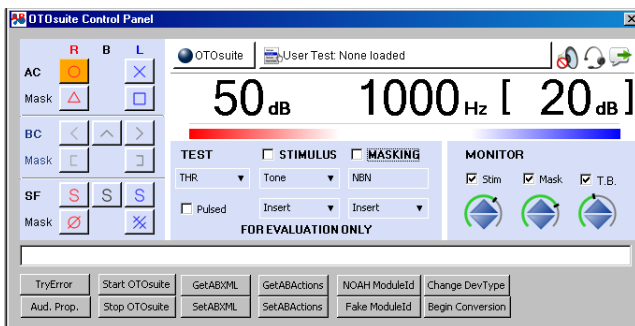
1. Start the AuditBaseSimulator, which is typically located here:

C:\Program Files\GN Otometrics\OTOSuite Control Panel for
AuditBase\AuditBaseSimulator.exe



2. Start OTOSuite by clicking the **OTOSuite** button.

The OTOSuite Control Panel connects automatically to OTOSuite.



If the above functions correctly, then OTOSuite and the Control Panel function correctly.

Manufacturer

GN Otometrics A/S
9 Hoerskaetten, DK-2630 Taastrup, Denmark
T: +45 45 75 55 55, F: +45 45 75 55 59
www.otometrics.com

Responsibility of the manufacturer

The manufacturer reserves the right to disclaim all responsibility for the operating safety, reliability and performance of equipment serviced or repaired by other parties.

Copyright notice

No part of this Installation Guide or program may be reproduced, stored in a retrieval system, or transmitted, in any form or by any means, electronic, mechanical, photocopying, recording, or otherwise, without the prior written consent of GN Otometrics A/S.

Copyright© 2011, GN Otometrics A/S

Printed in Denmark by Otometrics A/S, Denmark

All information, illustrations, and specifications in this document are based on the latest product information available at the time of publication. GN Otometrics A/S reserves the right to make changes at any time without notice.

Technical support

Please contact your supplier.

