

FAQ – OTODiagnostics Suite to OTOsuite

MKJ/PK – 5. Nov., 2007 (version 07)

1. What happens when I upgrade to OTOsuite?

Your existing MADSEN OTOflex 100 software – OTODiagnostics Suite - is merged into OTOsuite. The overall features and functionalities stay the same, but other OTOsuite modules are now available.

2. Does my PC meet the requirements to run OTOsuite?

Before starting the OTOsuite upgrade, our software automatically checks whether your PC meets the requirements. You can also ask your local sales representative to send you a tool that will check your PC against the OTOsuite requirements

3. Do I need a new device key?

Yes. The device key will be supplied when you purchase the upgrade. Please have the serial number of your MADSEN OTOflex 100 ready when ordering. The new license code should be typed in when connecting the OTOflex to OTOsuite for the first time.

4. Will I keep my current personal settings after the upgrade?

Yes. All settings are automatically transferred to OTOsuite during the upgrade process.

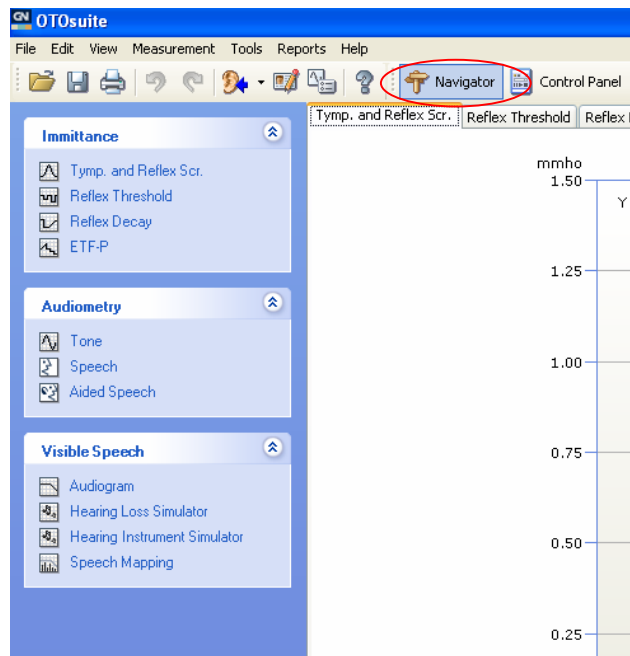
5. Do I need to learn a different way of operating my MADSEN OTOflex from the PC?

Your PC interface will be similar and you can keep using your MADSEN OTOflex 100 as before. However, OTOsuite does bring a few changes to the navigation.

Examples are:

How to find the Immittance module in OTOsuite:


1. Click on "Navigator" in the toolbar to view available Immittance modules in the left-side Navigator panel
2. Click on the desired Immittance module

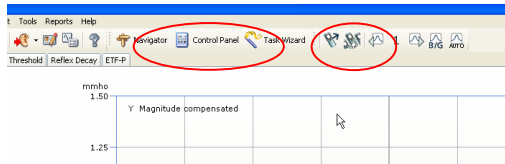


FAQ – OTodiagnostics Suite to OTOsuite

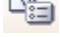
MKJ/PK – 5. Nov., 2007 (version 07)

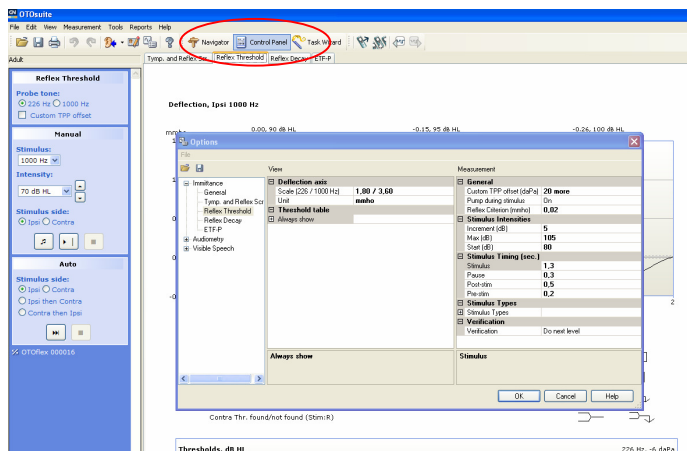
How to connect to the MADSEN OTOflex device for the first time:

1. Click on the  icon in the toolbar to search for your MADSEN OTOflex 100
2. Check the box that says, "My device is turned on and ready to be found"
3. Click on "Search"
4. When the device has been located, highlight your device and click "Finish"
5. Click on "Control panel" in the toolbar to connect to the selected OTOflex device, OR press F12
6. Enter the 4-digit device key

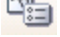



How to adjust the view and test settings in the OTOsuite format:

1. Click on "Options" in the "Tools" drop-down menu, OR click on the  icon in the toolbar
2. Click on "Immittance" in the left-side panel
3. Change settings as desired
4. Click "OK" to save your preferred settings and close the Options dialogue box



How to load test settings/protocols:



1. To load a test setting click on the  icon in the toolbar or click on "Options" in the "Tools" drop-down menu
2. Click on the folder icon  in the top left of the dialogue box to load a saved protocol



FAQ – OTDiagnostics Suite to OTOsuite


MKJ/PK – 5. Nov., 2007 (version 07)

How to save test settings/protocols:

1. To save a test setting click on the  icon in the toolbar or click on "Options" in the "Tools" drop-down menu
2. Click on the disk  icon in the top left of the dialogue box to save a protocol
3. Type desired name of protocol – it must be in the format ODSImp_XXXX.gnm (XXXX is the name you want the protocol to display in the software and on the handheld)



How to save changes to an existing setting/protocol:

1. Make the changes in view and/or measurement settings
2. To save a change to a current test setting click on the  icon in the toolbar or click on "Options" in the "Tools" drop-down menu
3. Click on file in the toolbar and choose "Save as"
4. Type desired name of protocol – it must be in the format ODSImp_XXXX.gnm (XXXX is the name you want) if the protocol is to be displayed in the software and on the handheld OTOflex unit.

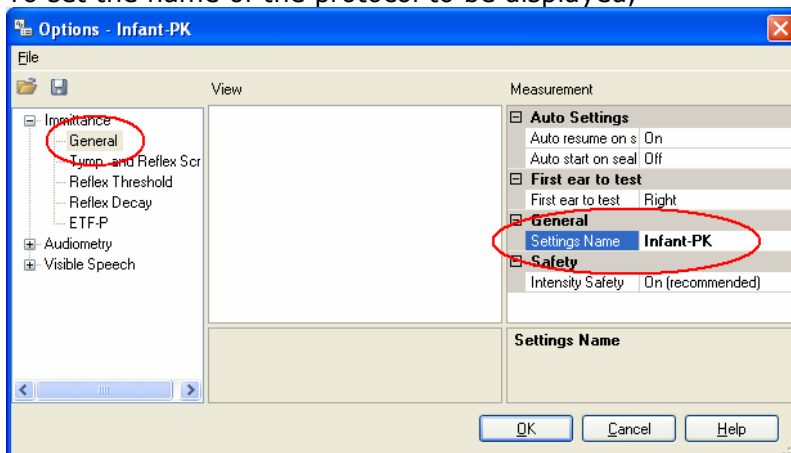


How to transfer protocol from OTOflex 100 into OTOsuite:

1. Connect to OTOflex
2. On the OTOflex, select the protocol you wish to transfer to OTOsuite
3. Hit Ctrl+M or click on the toolbar to open the settings dialog



4. To set the name of the protocol to be displayed,



5. In the "File" menu, select "Save As".
6. Enter the name of the file. You may want to use the Settings Name as the file name of part of the file name.
7. Click "Save"

FAQ – OTODiagnostics Suite to OTOsuite

MKJ/PK – 5. Nov., 2007 (version 07)

6. Can OTOsuite print Immittance reports?

Yes. There are several Immittance reports to choose from in OTOsuite, including a combined Audiometry and Immittance report. To access the reports click on the "Reports" pull-down menu.

7. Is my OTOflex able to auto connect in OTOsuite?

No. Since OTOsuite supports several applications/instruments you have to click on the control panel icon or the F12 key to connect to OTOflex.

8. Does OTOsuite include a help guide?

Yes. OTOsuite has a very extensive help guide that includes information about how to work in OTOsuite as well as how to operate the MADSEN OTOflex 100. Click the icon to get to the help menu.