

Document Description

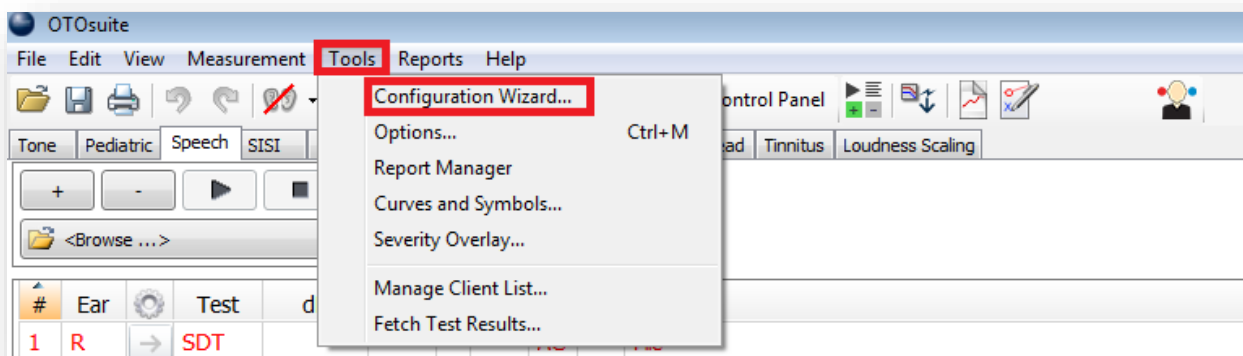
The document describes how to configure and add license keys into OTOSuite for Astera.

Configuration:

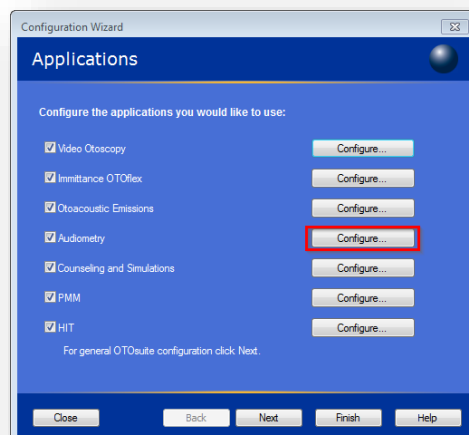
1. Open OTOSuite.



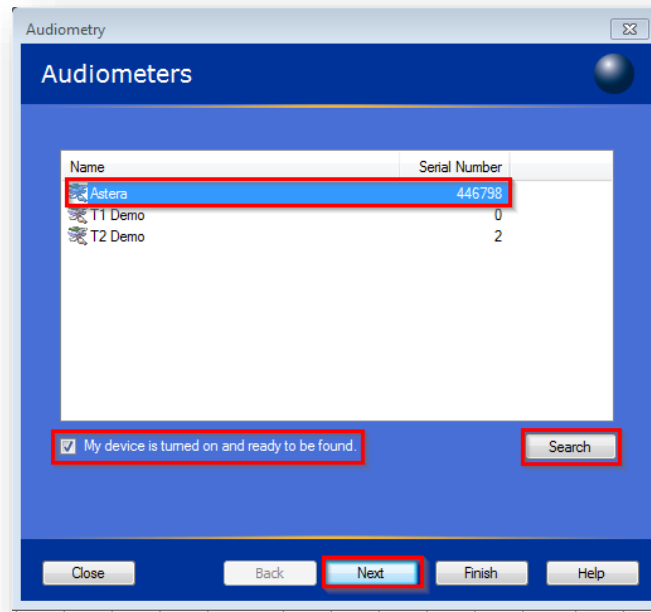
2. Go to **“Tools”** and the **“Configuration Wizard”** in the OTOSuite menu.



3. Click on the Audiometry **“Configure”** button.



4. Check the box **“My device is turned on and ready to be found”**. Click the **“Search”** button and wait until the connected Astera shows up on the list. Select the Astera to connect (highlighted in blue).
Don't select either the T1 or T2.
Click **“Next”**



5. Enter the license information from the supplied license document into **“My Customer Key”** and type in each of the supplied **“Application Keys”** next to each OTOsuite function that has to be activated. A green check mark will indicate that the information is typed correctly.

If any Application Key is added to an existing license(s), make sure that the **Customer Key** on the license paper match what is typed into the License Keys window.

NOTE: Customer and Application keys are optional and not required to operate audiometer. These keys may not be delivered with a new audiometer.

License Keys

The keys listed below are license keys to enable your registered features within the Purchased Software Application.

Customer Key:
XXXXXXXXXXXX

Application Key(s):
*Pediatric: XXXXXXXXXX
*QuickSIN: XXXXXXXXXX
*Simulators: XXXXXXXXXX
*TEN: XXXXXXXXXX
*Tinnitus: XXXXXXXXXX

License Agreement
GN Otometrics owns all rights to the present software (the "Software"), a software package that allows execution of certain related GN Otometrics measurement modules within the field of Audiology.

Audiometry

License Keys

Have you already purchased licenses for OTOSuite functionality?

Clear Customer Key

My Customer Key: XXXXX - GXXXX - XXXX ✓

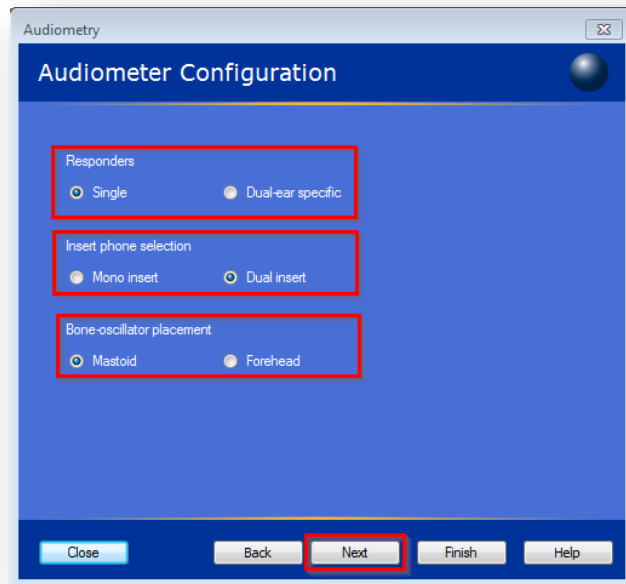
Enter your License Keys to unlock OTOSuite functions:

QuickSIN	XXXX	-	XXXX	-	XXXX	✓
TEN for AURICAL Aud	XXXX	-	XXXX	-	XXXX	✓
LIPread	XXXX	-	XXXX	-	XXXX	✓
Pediatric	XXXX	-	XXXX	-	XXXX	✓
Loudness Scaling for AURICAL Aud	XXXX	-	XXXX	-	XXXX	✓

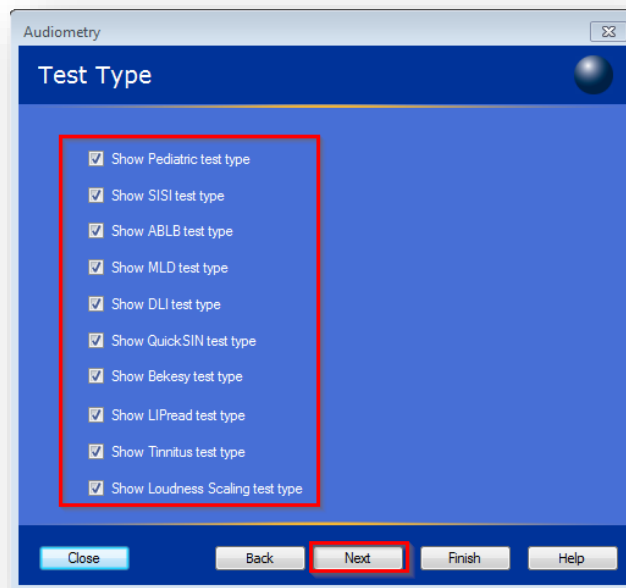
Close Back **Next** Finish Help

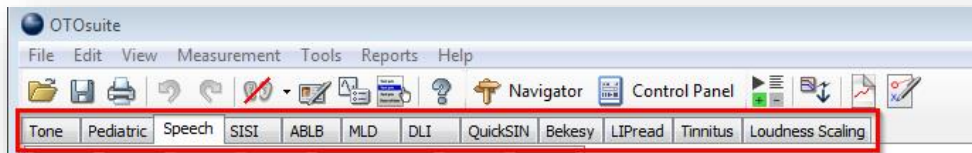
6. Click **"Next"**.

7. Configure the **"Single"** for Responders, **"Dual insert"** for Insert phone selection and **"Mastoid"** for Bone oscillator placement. Click **"Next"**.

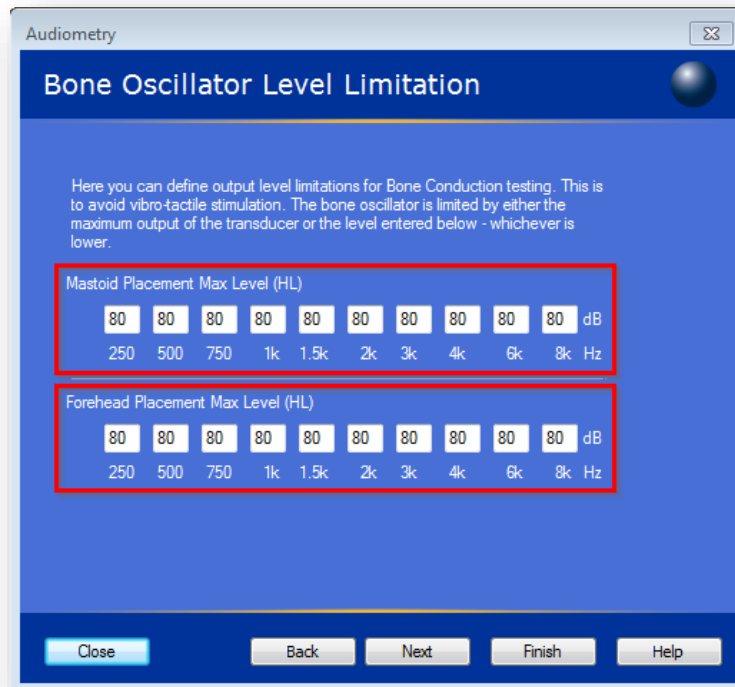


8. Select the various **"Test Types"** that has to be shown in the OTOsuite toolbar. Click **"Next"**.

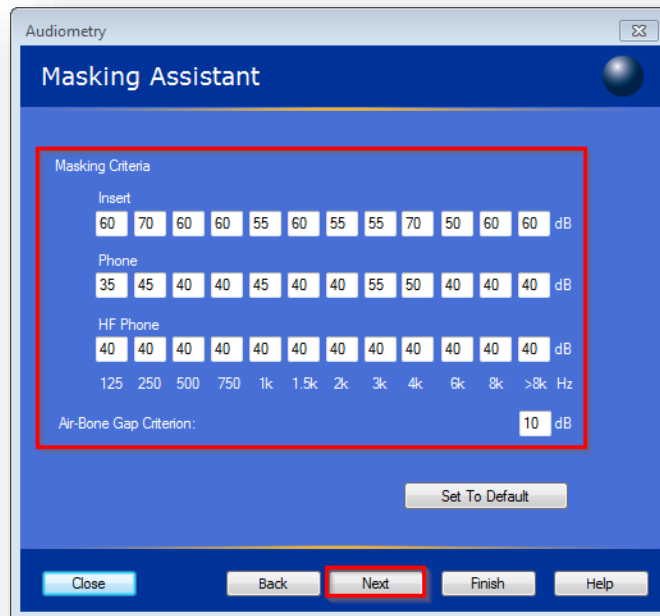




- Settings for the Maximum output level (HL) for the Bone connector. (Normally not changed)
Click **“Next”**.



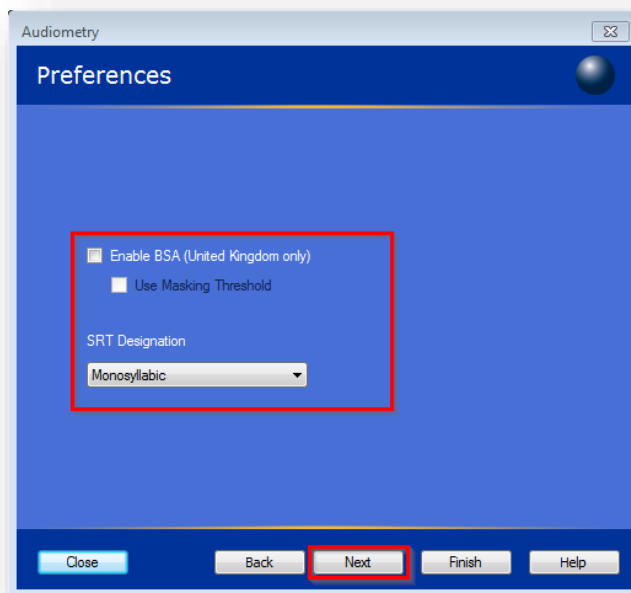
- Settings for the Masking and Air-Bone Gab criteria (Normally not changed)
Click **“Next”**.



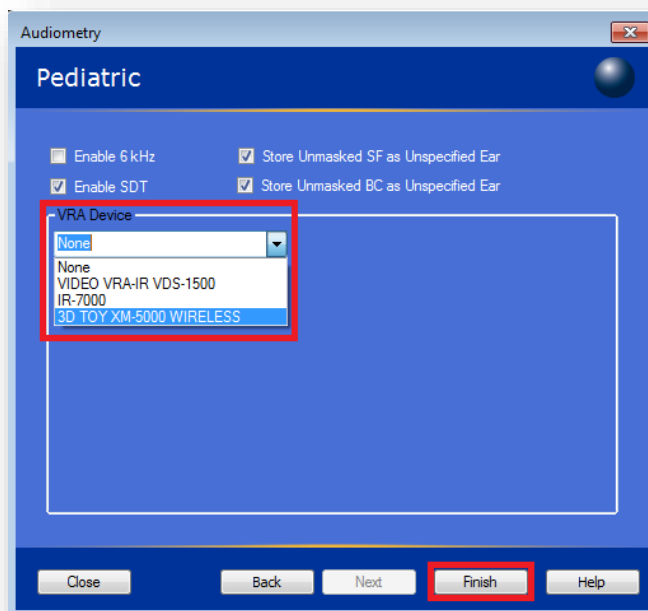
11. Settings for the Depth and Rate Warble settings (Normally not changed)
Click **“Next”**.



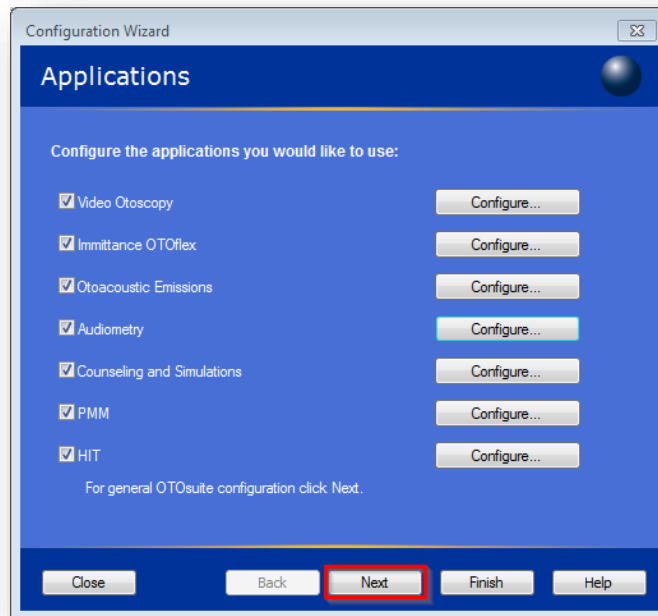
12. Settings in **“Preferences”** are normally not changed. Click **“Next”**.



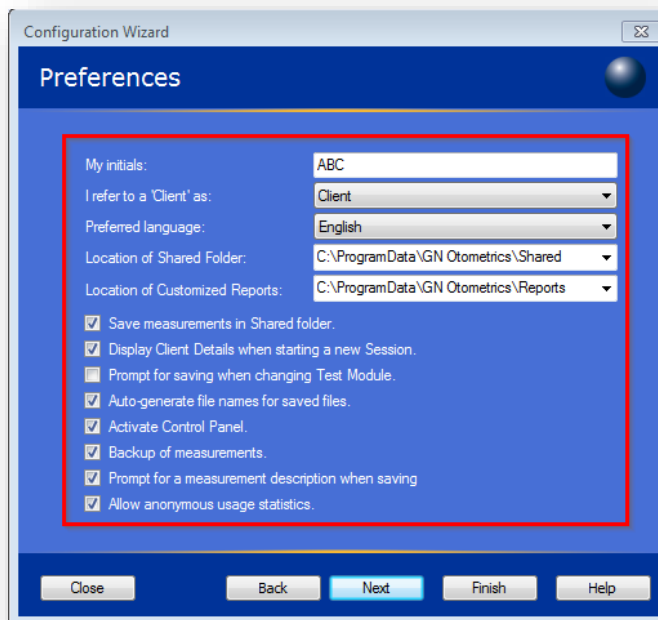
13. When using VRA devices, make sure that the correct model is selected from the drop down list. Click **“Finish”** to exit the OTOsuite configuration.



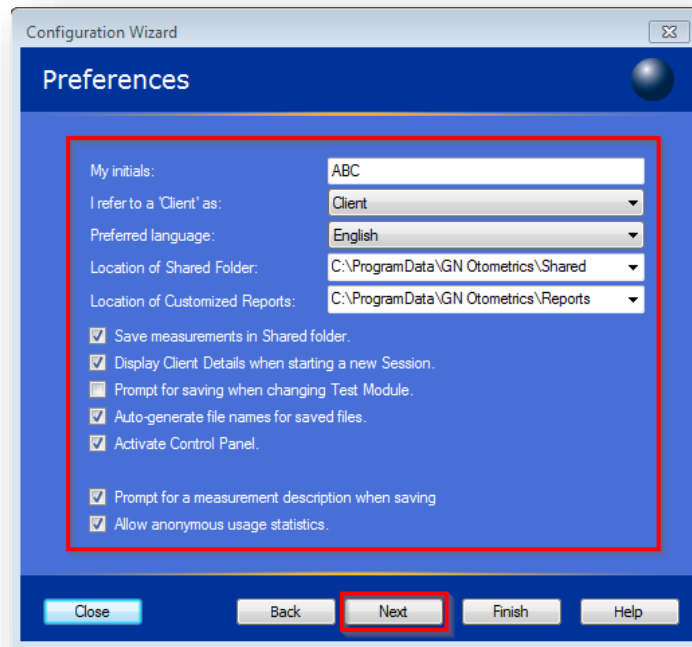
14. Click **“Next”**.



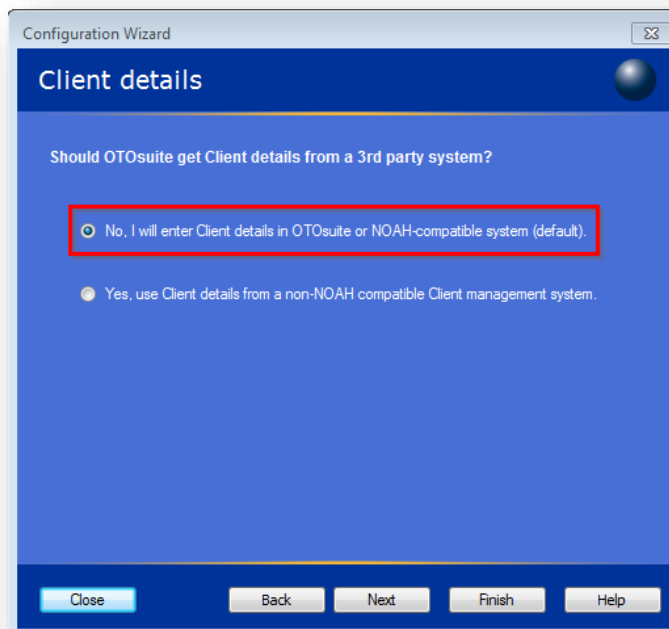
15. Preferences settings when OTOSuite is used stand-alone.



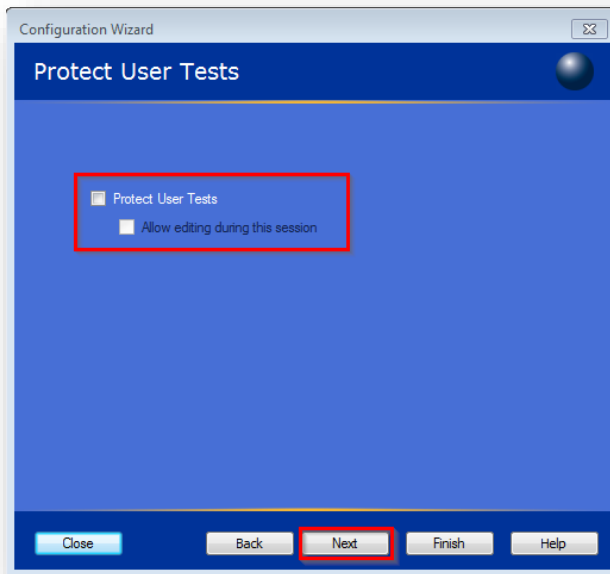
16. Preferences settings when OTOSuite is used inside of NOAH. Click "Next".



17. Select “No, I will enter Client details in OTOsuite or NOAH compatible system”.



18. If the “Protect User Tests” is selected, it will **not** be possible to save OTOsuite start up setting, and the user test settings.



19. Select **“Do not connect to any database. Data is saved in the file system”**. Click **“Finish”** to exit the configuration.

