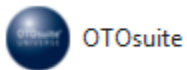


Document Description

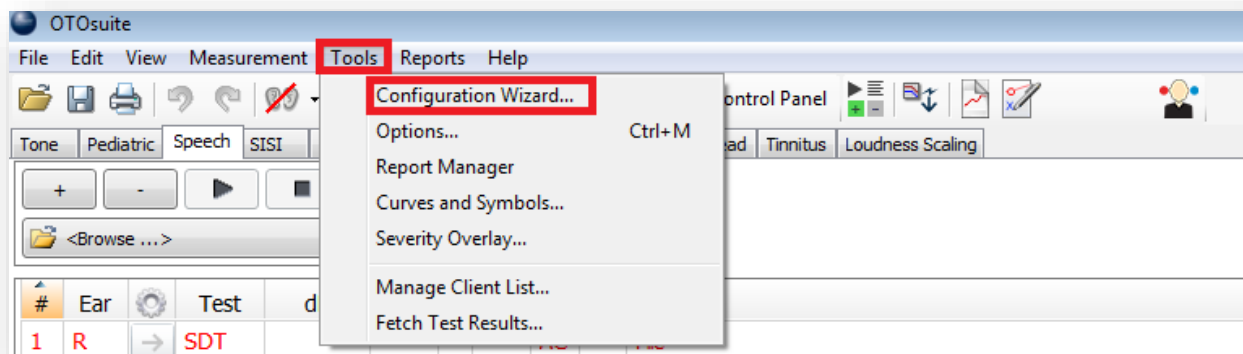
The document describes how to configure and add license keys into OTOsuite for Aurical AUD.

Configuration:

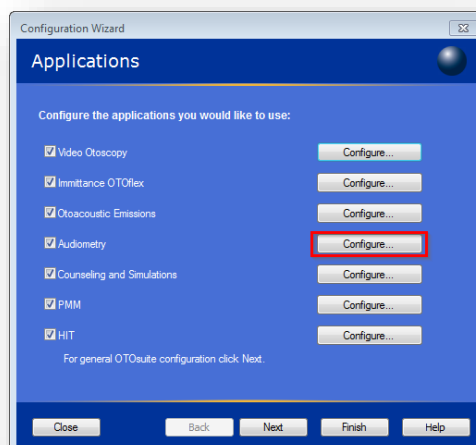
1. Open Otosuite.



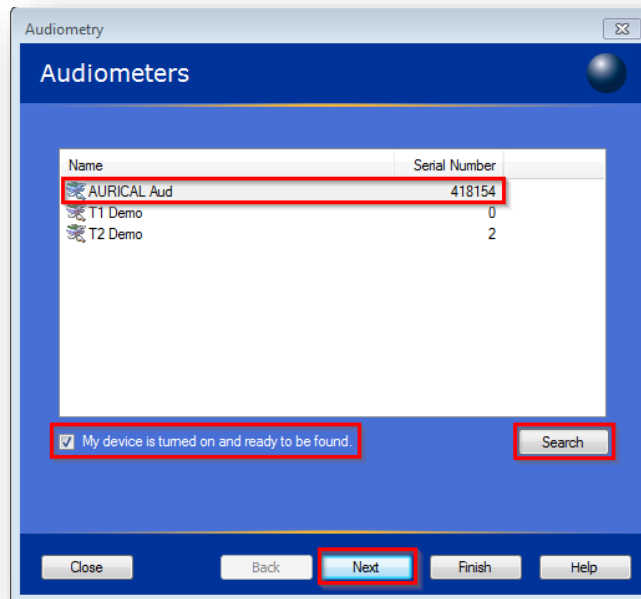
2. Go to **“Tools”** and the **“Configuration Wizard”** in the OTOsuite menu.



3. Click on the Audiometry **“Configure”** button.



4. Check the box **“My device is turned on and ready to be found”**. Click the **“Search”** button and wait until the connected Aurical Aud shows up on the list. Select the Aurical Aud to connect (highlighted in blue). *Don't select either the T1 or T2.*
Click **“Next”**



5. Enter the license information from the supplied license document into **“My Customer Key”** and type in each of the supplied **“Application Keys”** next to each OTOsuite function that has to be activated . A green check mark will indicate that the information is correctly typed in.

If any Application Key is added to an existing license(s), make sure that the Customer Key on the license paper match what is typed into the License Keys window.

NOTE: Customer and Application keys are optional and not required to operate audiometer. These keys may not be delivered with a new audiometer.

License Keys	
The keys listed below are license keys to enable your registered features within the Purchased Software Application.	
Customer Key:	XXXXXXXXXXXX
Application Key(s):	
*Pediatric:	XXXXXXXXXXXX
*QuickSIN:	XXXXXXXXXXXX
*Simulators:	XXXXXXXXXXXX
*TEN:	XXXXXXXXXXXX
*Tinnitus:	XXXXXXXXXXXX
License Agreement	
GN Otometrics owns all rights to the present software (the "Software"), a software package that allows execution of certain related GN Otometrics measurement modules within the field of Audiology.	



Audiometry

License Keys

Have you already purchased licenses for OTOSuite functionality?

Clear Customer Key

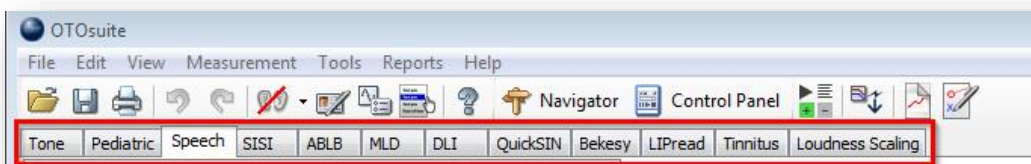
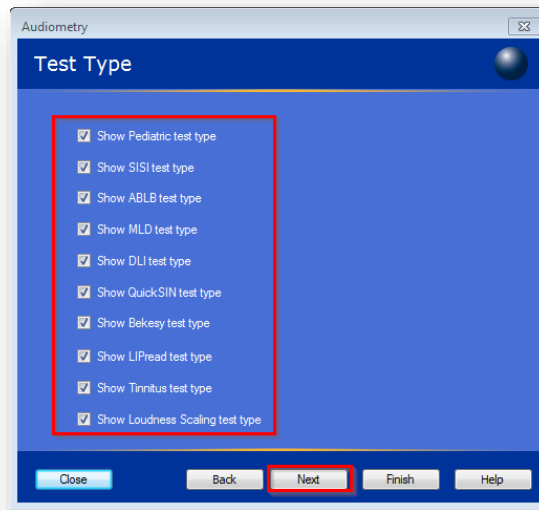
My Customer Key: XXXXXX - OTOMETRICS - XXXX ✓

Enter your License Keys to unlock OTOSuite functions:

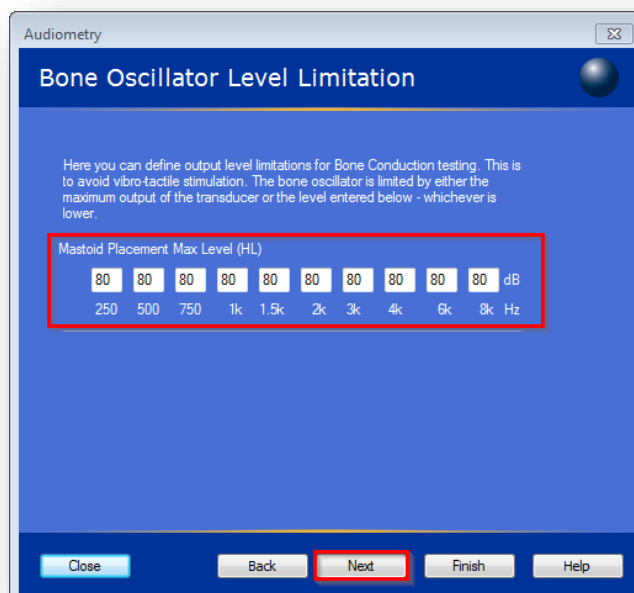
QuickSIN	XXXXXX	XXXXXX	XXXXXX	✓
TEN for AURICAL Aud	XXXXXX	XXXXXX	XXXXXX	✓
LIPread	XXXXXX	XXXXXX	XXXXXX	✓
Pediatric	XXXXXX	XXXXXX	XXXXXX	✓
Loudness Scaling for AURICAL Aud	XXXXXX	XXXXXX	XXXXXX	✓

Close Back **Next** Finish Help

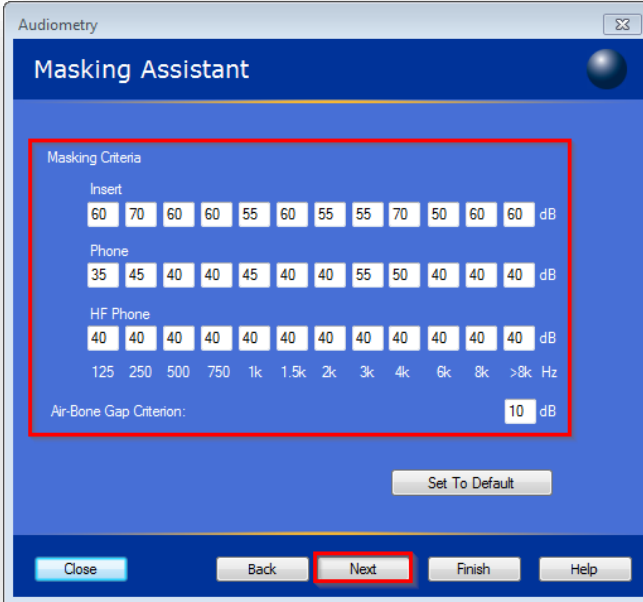
6. Click **“Next”**.
7. Select the various **“Test Types”** that has to be shown in the OTOSuite toolbar.



8. Settings for the Maximum output level (HL) for the Bone connector. (Normally not changed). Click **“Next”**.



9. Settings for the Masking and Air-Bone Gap criteria (Normally not changed).
Click **“Next”**.



Audiometry

Masking Assistant

Masking Criteria

Insert

60	70	60	60	55	60	55	55	70	50	60	60	dB
----	----	----	----	----	----	----	----	----	----	----	----	----

Phone

35	45	40	40	45	40	40	55	50	40	40	40	dB
----	----	----	----	----	----	----	----	----	----	----	----	----

HF Phone

40	40	40	40	40	40	40	40	40	40	40	40	dB
----	----	----	----	----	----	----	----	----	----	----	----	----

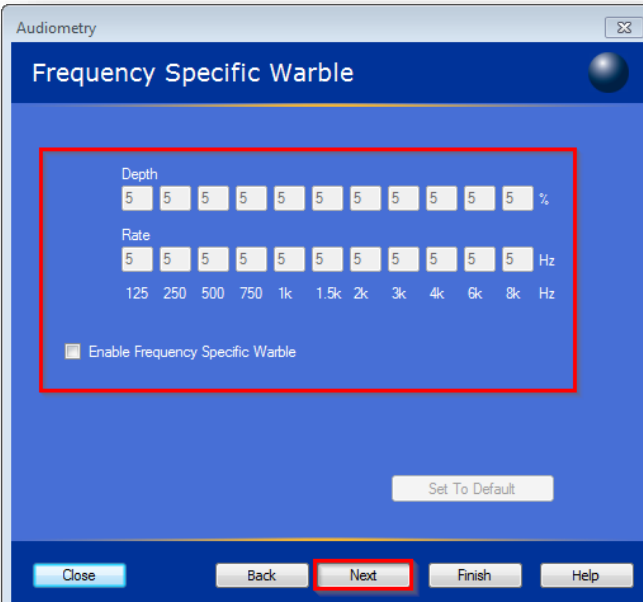
125 250 500 750 1k 1.5k 2k 3k 4k 6k 8k >8k Hz

Air-Bone Gap Criterion: 10 dB

Set To Default

Close Back **Next** Finish Help

10. Settings for the Depth and Rate Warble settings (Normally not changed).
Click **“Next”**.



Audiometry

Frequency Specific Warble

Depth

5	5	5	5	5	5	5	5	5	5	5	5	%
---	---	---	---	---	---	---	---	---	---	---	---	---

Rate

5	5	5	5	5	5	5	5	5	5	5	5	Hz
---	---	---	---	---	---	---	---	---	---	---	---	----

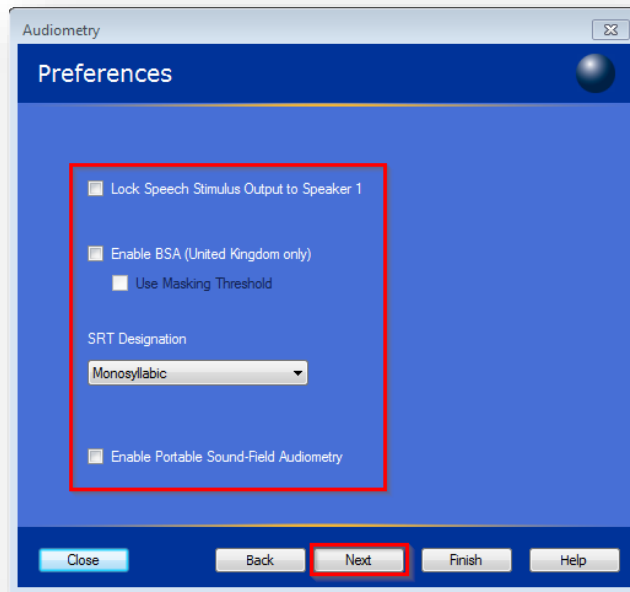
125 250 500 750 1k 1.5k 2k 3k 4k 6k 8k Hz

Enable Frequency Specific Warble

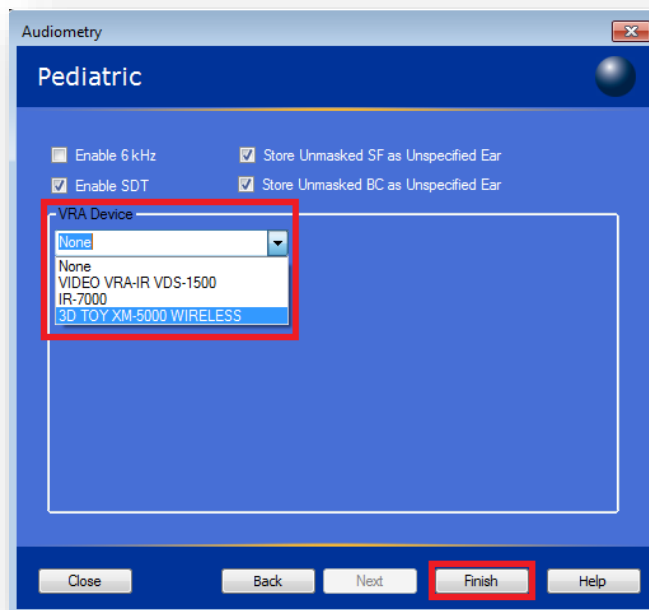
Set To Default

Close Back **Next** Finish Help

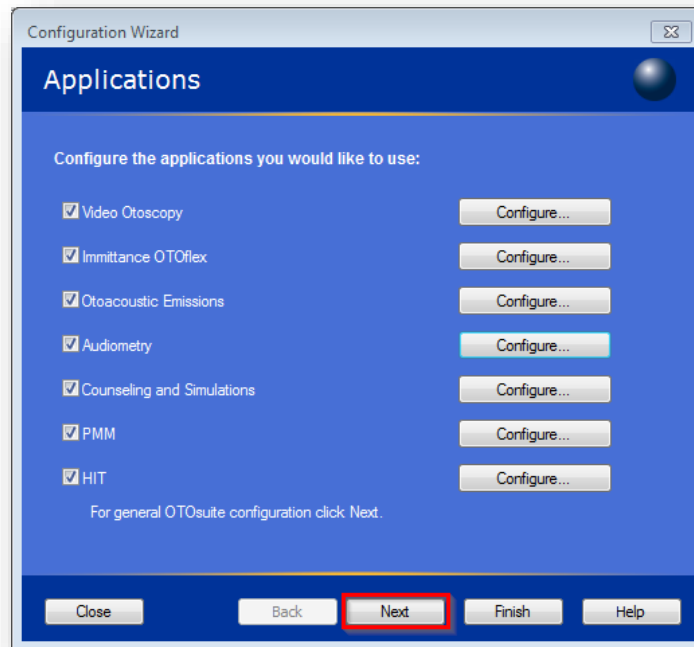
11. Settings in “**Preferences**” are normally not changed. Click “**Next**”.



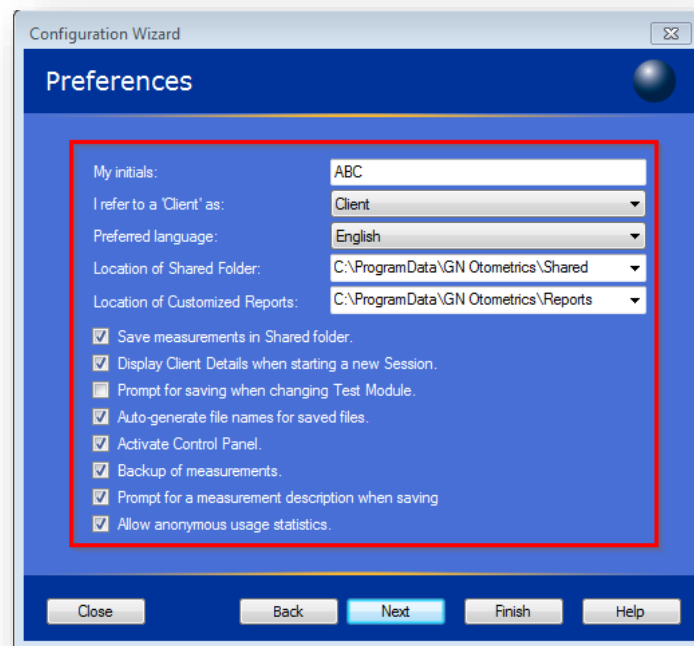
12. When using VRA devices, make sure that the correct model is selected from the drop down list. Click “**Finish**” to exit the OTOSuite configuration.



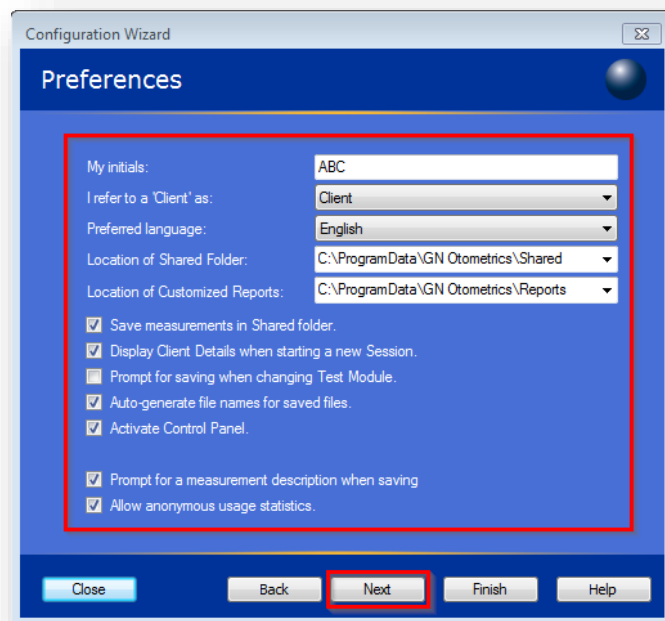
13. Click “**Next**”.



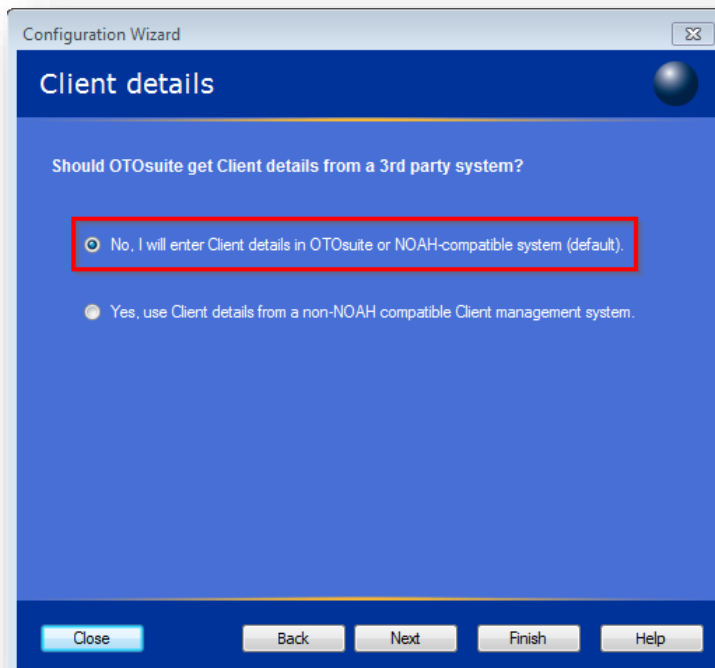
14. Preferences settings when OTOSuite is used stand-alone.



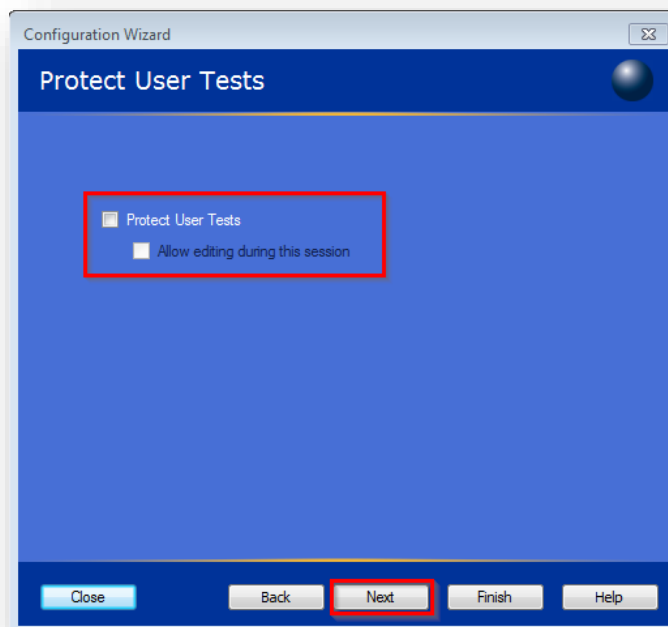
15. Preferences settings when OTOSuite is used inside of NOAH. Click "Next".



16. Select **“No, I will enter Client details in OTOSuite or NOAH compatible system”**.



17. If the **“Protect User Tests”** is selected, it will **not** be possible to save OTOSuite start up setting, and the user test settings.



18. Select **“Do not connect to any database. Data is saved in the file system”**. Click **“Finish”** to exit the configuration.

