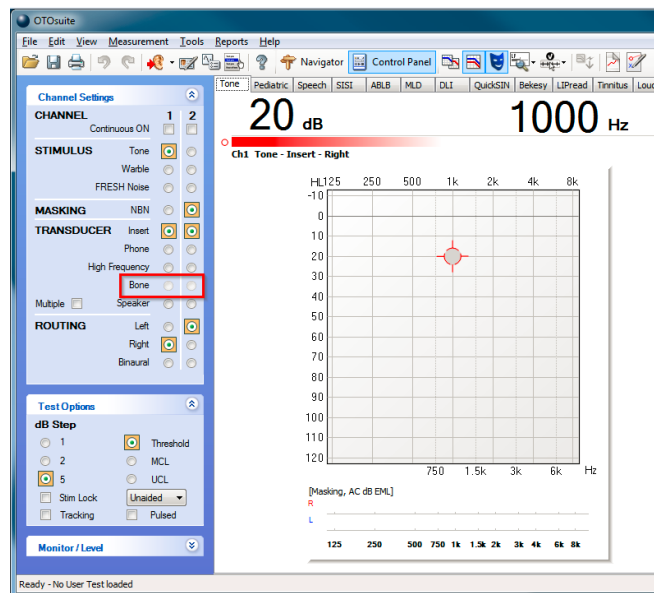


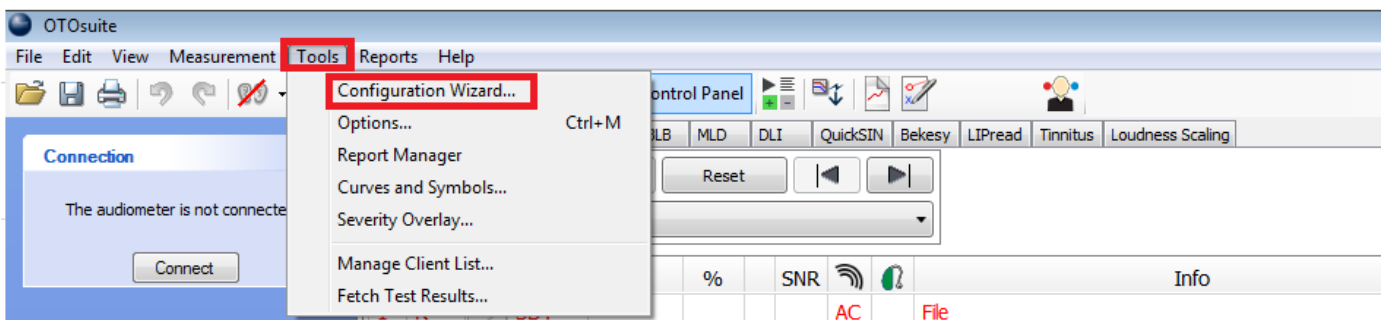
## Document Description

The document describes how to solve the problem when the Bone is greyed out in the control panel and not possible to select.

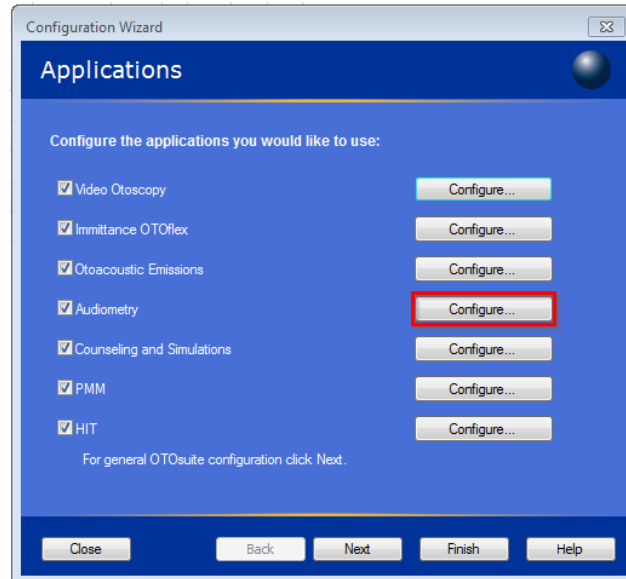
1. **“Bone”** is greyed out and not possible to select.



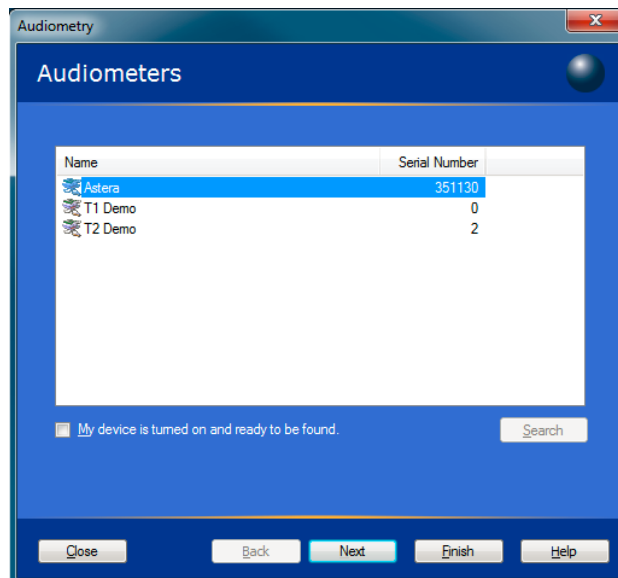
2. Go to **“Tools”** and click on the **“Configuration Wizard”**.



- Click on Audiometry **“Configure”**.



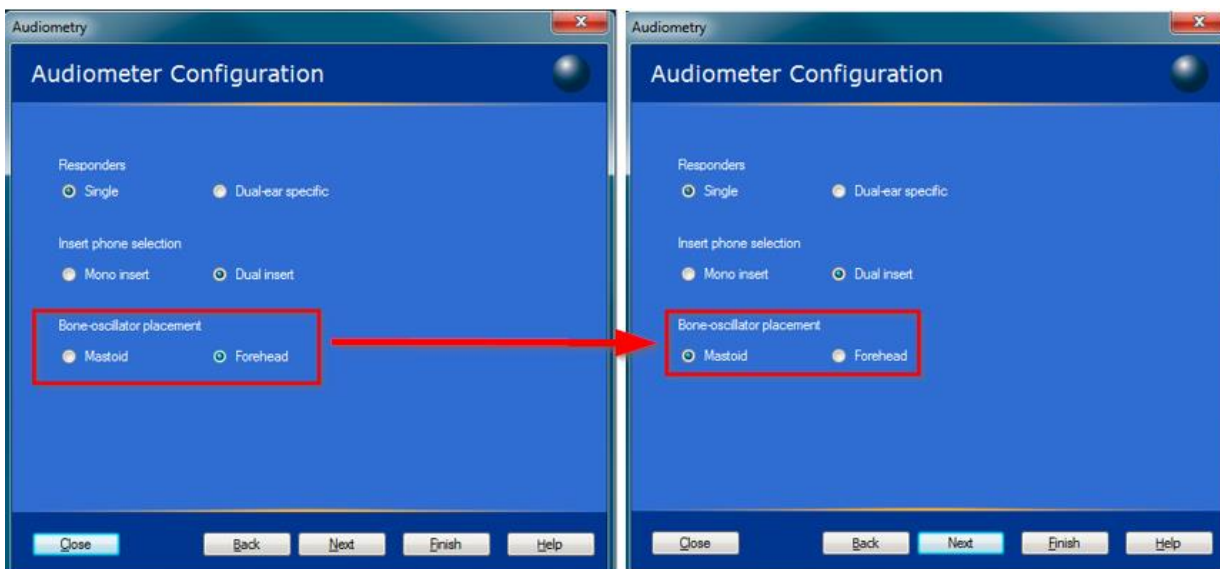
- Highlight (marked with blue) the Astera to connect, and click **“Finish”**.



- Click **“Next”**.



- Change the Bone-oscillator placement **“Forehead”** to **“Mastoid”**.



7. Now it's possible to select "Bone" in the control panel.

