

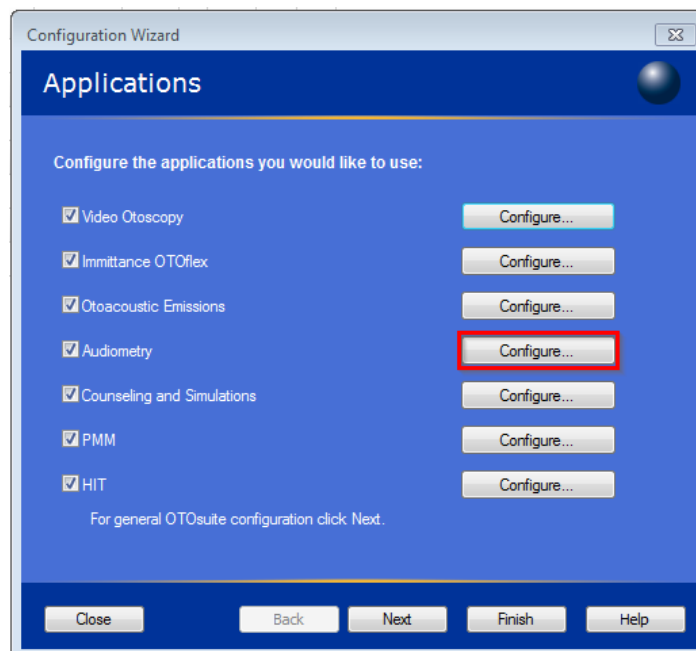
Document Description

The document describes how to disable the Manual entry in OTOsuite Audiometry.

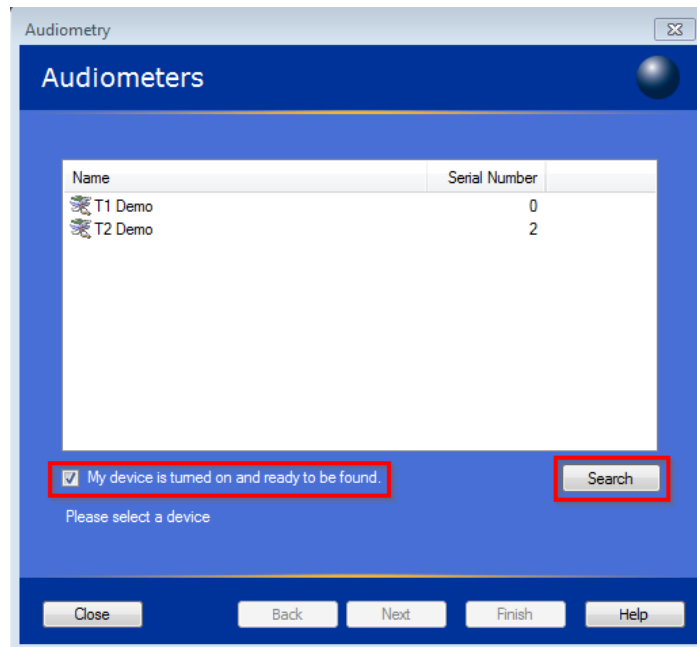
1. Go to **“Tools”** and click on the **“Configuration Wizard”**.



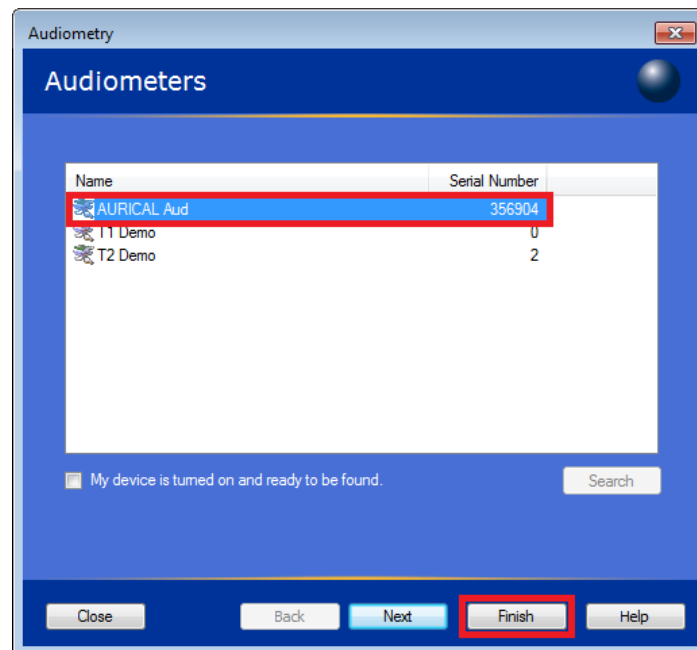
2. Click on Audiometry **“Configure”**.



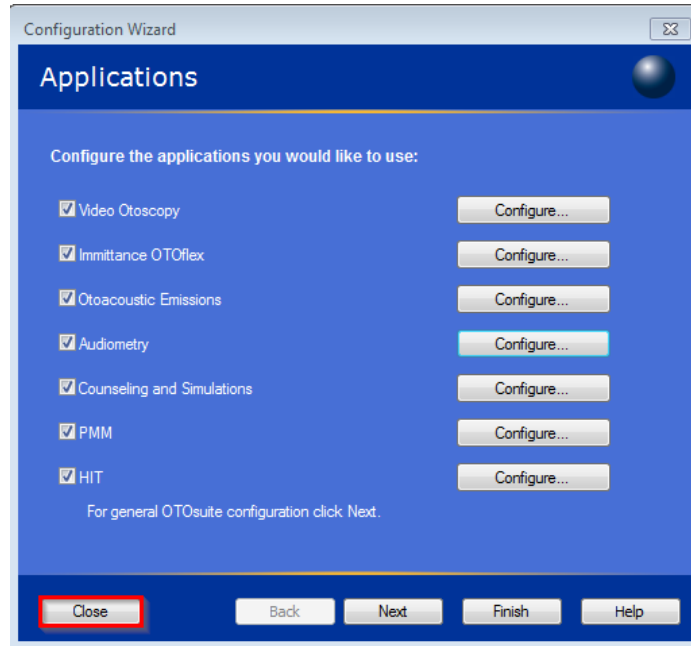
3. Select the **“My device is turned on and ready to be found”** and click **“Search”**.



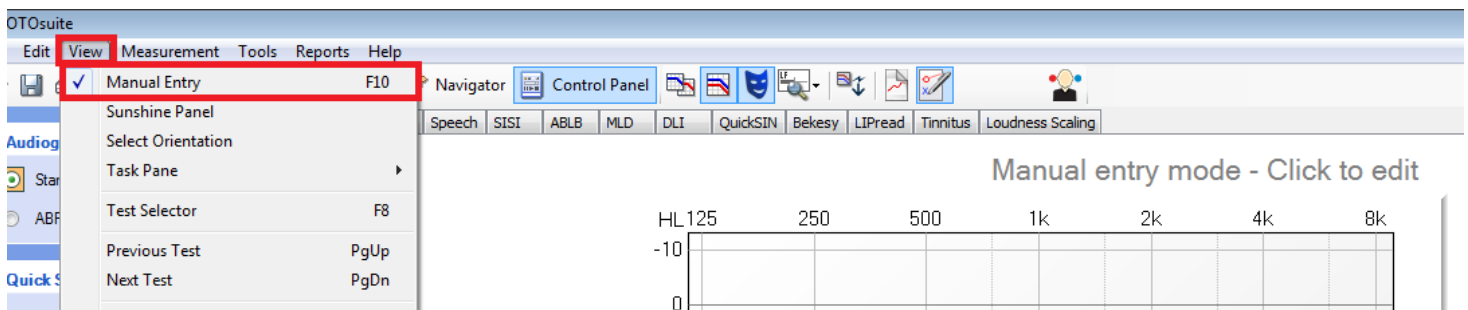
4. Highlight (marked with blue) the instrument to connect, and click **“Finish”**.



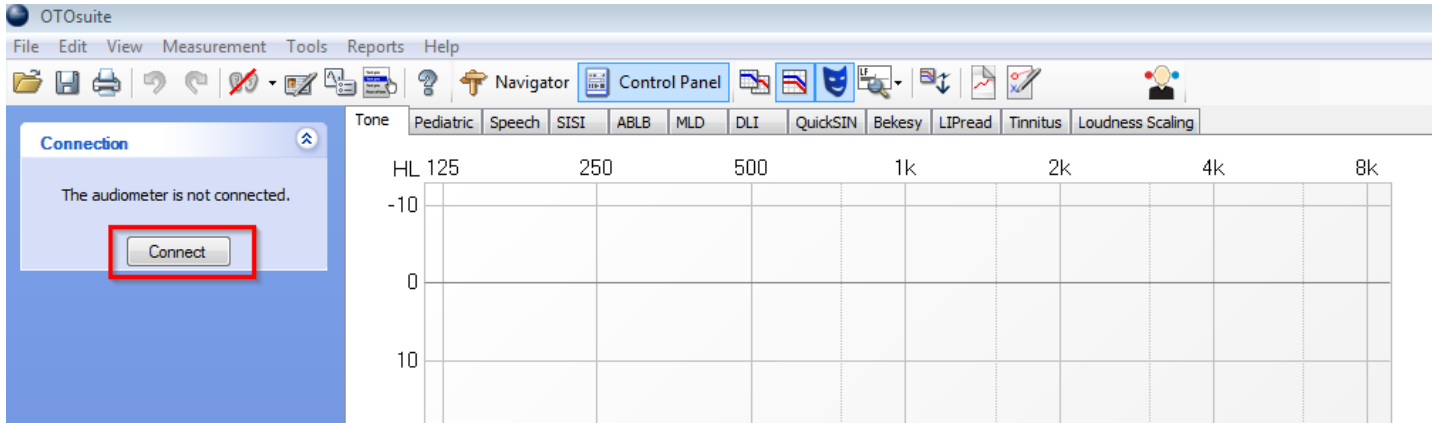
5. Click “Close”.



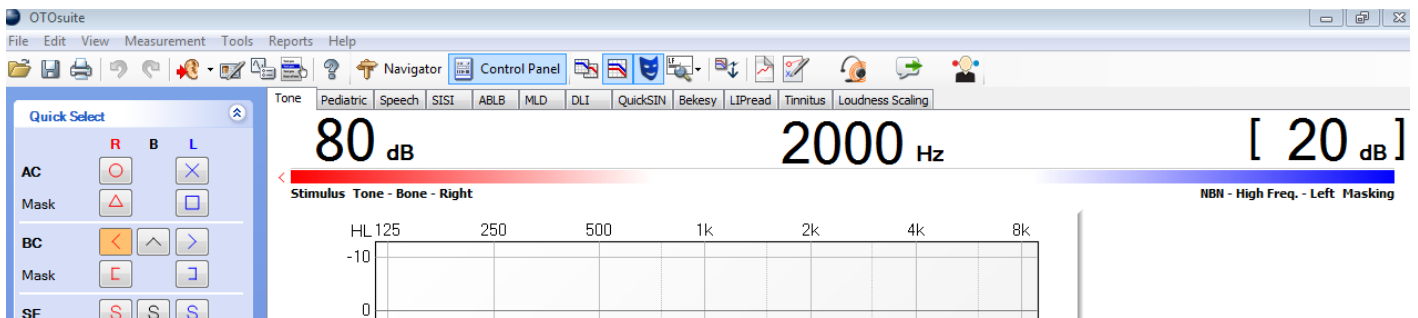
6. Go to “View” and remove the “Manual Entry” check mark.



7. Click on **“Connect”** to establish connection to the selected Audiometer.



8. Connected.



9. Save as startup setting.

