

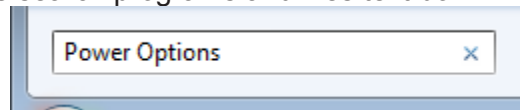
Document Description

This document describes the steps on how to change the USB power suspension settings in Windows

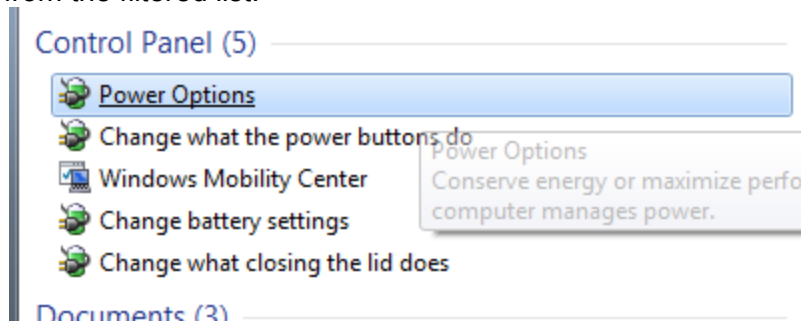
1. Click “Start”



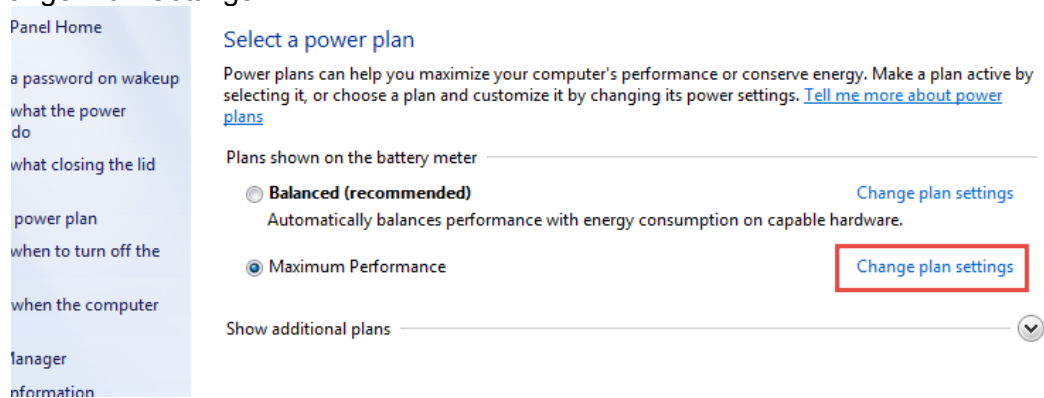
2. Enter “Power Options” in the search programs and files text box.



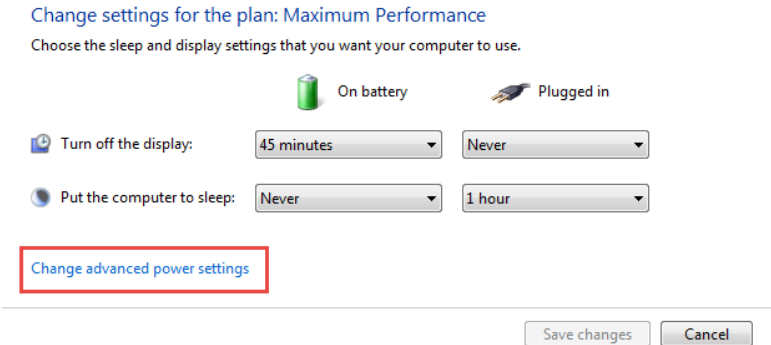
3. Click “Power Options” from the filtered list.



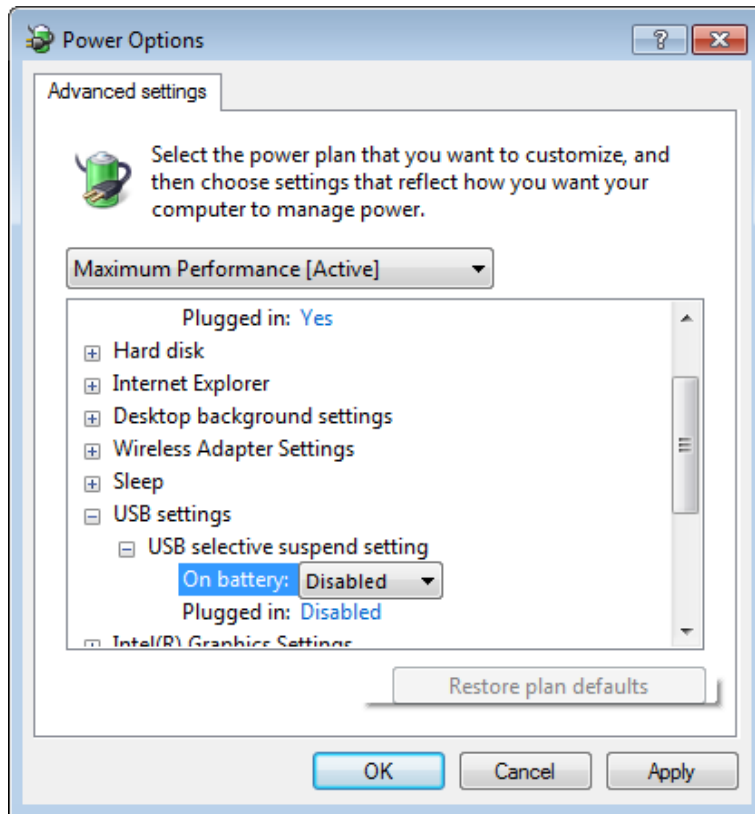
4. Select “Change Plan Settings”



5. Select “Change Advanced Power Settings”



6. Find “USB settings” on the list click the “+”.
- Click the “+” for “USB Selective Suspend Setting”.
 - Change both “On Battery” and “Plugged In”. to “Disabled”.



7. Click “APPLY”. You may be prompted to restart the computer to ensure the settings are finalized.